

Dobrava-Belgrade Virus Spillover Infections, Germany

**Mathias Schlegel,¹ Boris Klempa,¹ Brita Auste,
Margrit Bemann, Jonas Schmidt-Chanasit,
Thomas Büchner, Martin H. Groschup,
Markus Meier, Anne Balkema-Buschmann,
Hinrich Zoller, Detlev H. Krüger,
and Rainer G. Ulrich**

We present the molecular identification of *Apodemus agrarius* (striped field mouse) as reservoir host of the Dobrava-Belgrade virus (DOBV) lineage DOBV-Aa in 3 federal states of Germany. Phylogenetic analyses provided evidence for multiple spillover of DOBV-Aa to *A. flavicollis*, a crucial prerequisite for host switch and genetic reassortment.

European hantaviruses are emerging viruses that can cause hemorrhagic fever with renal syndrome (HFRS) of differing severities. Dobrava-Belgrade virus (DOBV) is a hantavirus that appears in 3 distinct lineages hosted by different *Apodemus* species. The DOBV-Af lineage associated with the yellow-necked mouse (*A. flavicollis*) has caused serious HFRS in southeast Europe with a case-fatality rate $\leq 12\%$ (1,2). Human infections with Caucasian wood mouse (*A. ponticus*)-associated DOBV-Ap have resulted in more moderate than severe HFRS in the southern part of European Russia (3). Mild-to-moderate human DOBV disease in central and eastern Europe has been connected with infection by DOBV-Aa lineage carried by the striped field mouse (*A. agrarius*) (3–5). Other *A. agrarius*-associated strains, found in Estonia and called Saaremaa virus, have been proposed to form a distinct hantavirus species (6). In Germany, human DOBV cases with mild to moderate clinical outcomes have been detected by sero-

logic investigations (4,7) but only 1 short DOBV-Aa small (S) segment sequence derived from a patient in northern Germany has been identified (8). The natural host and the geographic distribution of DOBV in its reservoir host has remained unknown in Germany.

The Study

During 2002 through 2008, a total of 366 *Apodemus* mice were trapped at 7 different sites in Germany (Figure 1). Serologic screening of transudates collected from these rodents by using an in-house DOBV immunoglobulin (Ig) G-ELISA, with a yeast-expressed nucleocapsid protein of DOBV-Af as antigen, identified 16 reactive and 5 equivocal samples of 114 *A. agrarius* trapped at 7 trapping sites in 3 federal states of Germany (Figure 1; online Technical Appendix, available from www.cdc.gov/EID/content/15/12/2017-Techapp.pdf). Additionally, of 237 *A. flavicollis* mice, 1 equivocal sample and 4 DOBV-reactive samples were detected at 4 trapping sites (Figure 1; online Technical Appendix). In contrast, of 15 wood mice (*A. sylvaticus*) originating from 3 trapping sites, none were found to be DOBV-seroreactive. A subsequent focus-reduction neutralization test showed a higher endpoint titer with DOBV-Aa than DOBV-Af (online Technical Appendix) for 6 of the 8 investigated transudates independently, whether originating from *A. agrarius* or *A. flavicollis*.

An initial screening by a large (L) segment-specific nested reverse transcription-PCR (RT-PCR) (3) of 67 lung samples, representing all seroreactive ($n = 20$) and equivocal ($n = 6$) as well as 36 selected seronegative and 5 serologically not-analyzed animals, showed a 390-nt amplification product for 21 samples representing 16 seroreactive, 4 seronegative, and 1 serologically not-investigated animals (online Technical Appendix). To enable a comparison with the only available DOBV sequence from Germany (H169), an S segment portion of 559 nt was amplified by RT-PCR from 11 lung tissues (online Technical Appendix). In the phylogenetic analyses, all sequences from Germany formed 1 well-supported (PUZZLE [www.tree-puzzle.de]) and bootstrap support values $>90\%$) monophyletic group consisting of 2 clusters. The first cluster contained S segment sequences from district Güstrow (trapping sites Pe1 and Pe3), Lüneburg (trapping site WG), Nordvorpommern (trapping site H), and the previously published DOBV sequence from an HFRS patient from northern Germany (H169; [8]; Figure 2, panel A). A second cluster was formed by S segment sequences originating from districts Ostprignitz-Ruppin (trapping sites Ka, To) and Demmin (trapping site K/A1). Notably, the *A. flavicollis*-derived sequences from sites Pe1, H, Ka, and K/A1 clustered together or were identical with *A. agrarius*-derived sequences from the same or neighboring trapping sites, suggesting multiple

¹These authors contributed equally to this article.

Author affiliations: Friedrich-Loeffler-Institut—Institute for Novel and Emerging Infectious Diseases, Greifswald-Insel Riems, Germany (M. Schlegel, T. Büchner, M.H. Groschup, A. Balkema-Buschmann, R.G. Ulrich); Charité-Universitätsmedizin Berlin, Berlin, Germany (B. Klempa, B. Auste, D.H. Krüger); Slovak Academy of Science, Bratislava, Slovakia (B. Klempa); Landesforstanstalt Mecklenburg-Vorpommern, Schwerin, Germany (M. Bemann); Bernhard-Nocht-Institute for Tropical Medicine, Hamburg, Germany (J. Schmidt-Chanasit); University of Lübeck, Lübeck, Germany (M. Meier); and University of Rostock, Rostock, Germany (H. Zoller)

DOI: 10.3201/eid1512.090923

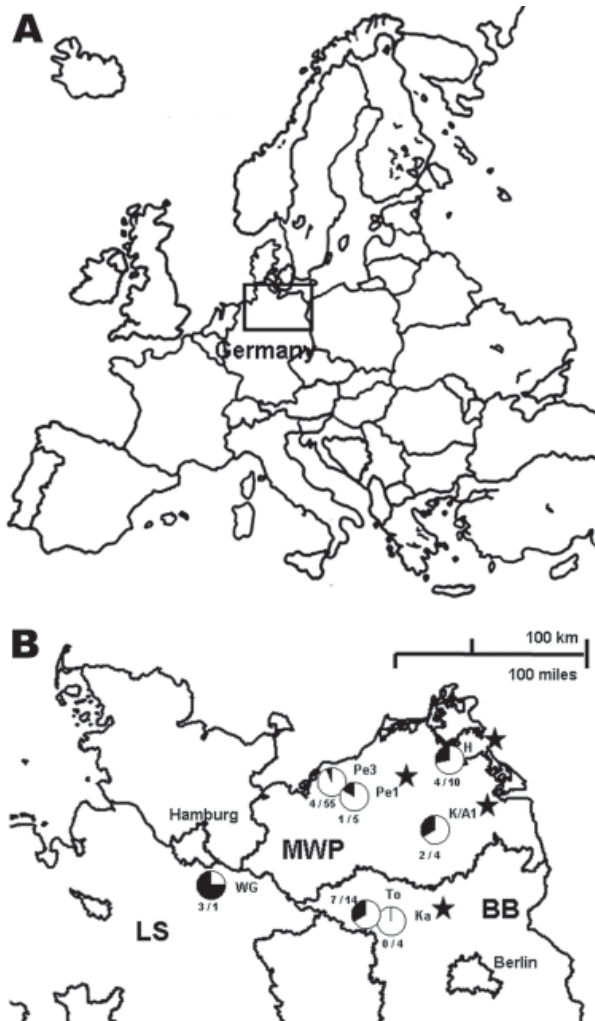


Figure 1. Seroprevalence of Dobrava-Belgrade virus (DOBV) in *Apodemus agrarius* mice within 3 federal states of Germany, central Europe. A) Location of the study area (box). B) Locations of the study sites. WG, Lüneburg district, Lower Saxony (LS); Pe1 and Pe3, Güstrow district; H, Nordvorpommern district, K/A1, Demmin district, all Mecklenburg-Western Pomerania (MWP); To and Ka, Ostprignitz-Ruppin district, Brandenburg (BB). For each trapping site, the rate of seroreactive *A. agrarius* mice is given as a circle (seroreactive and equivocal samples in black, negative samples in white) and with the numbers of seroreactive and equivocal samples/negative samples. At sites Pe1, H, K/A1, and Ka, 1 seroreactive *A. flavicollis* mouse was detected in each location (marked with stars). At site Pe1, 1 equivocal sample was found by the DOBV immunoglobulin (Ig) G ELISA. In addition to *Apodemus* mice, 138 rodents of other species, including 116 bank voles (*Myodes glareolus*), were trapped during the same period at sites Pe1, Pe3, K/A1, Ka, and To, but none of the 136 rodents with available transudates reacted in the DOBV IgG ELISA. Transudates with an optical density (OD) value below the lower cutoff (average of the OD values determined for 2 parallel tests of a negative *Apodemus* spp. serum control; average 0.041) were regarded as negative. Samples with an OD value above the upper cutoff (2-fold of the lower cutoff; average 0.082) were regarded as positive. Samples showing OD values between the lower and upper cutoffs were regarded as equivocal.

spillover infections (Figure 2, panel A; online Technical Appendix).

The sequences from Germany share a common ancestor with the DOBV-Aa sequences originating from Slovakia and Russia. Together, they form a monophyletic group (DOBV-Aa lineage) that is clearly separated from *A. flavicollis*-borne (DOBV-Af) and *A. ponticus*-borne (DOBV-Ap) sequences and from *A. agrarius*-borne Saaremaa virus sequences. Subsequent analysis of nucleotide sequences of the entire nucleocapsid (N) protein- and glycoprotein precursor (GPC)-encoding regions confirmed these findings (Figure 2, panel B; online Technical Appendix). A pairwise comparison between nucleotide and amino acid sequences of the complete N and GPC open reading frames from the novel German DOBV strains showed divergences of 1.5%–8.8% (0.3%–1.4%) and 2.1%–8.3% (0.8%–1.8%), respectively (online Technical Appendix Table 2). The highest identity values on the nucleotide and amino acid sequence level (91.2%–91.7% and 99%–99.7%) were found for an S segment sequence from Denmark (Lolland/1403; GenBank accession no. AJ616854; online Technical Appendix). The nucleotide and amino acid sequence divergence to other DOBV sequences was much higher, reaching 10.1%–14.3% (1%–3.3%) and 12.6%–20.7% (2.9%–9.4%), respectively.

Morphologic species determination for all DOBV-seroreactive and RT-PCR-positive rodents was confirmed by a mitochondrial *cytochrome b* gene-specific PCR (9,10), sequence determination, and comparison with available GenBank sequences from *A. agrarius* and *A. flavicollis* (online Technical Appendix).

Conclusions

Based on a large panel of the entire N- and GPC-encoding DOBV sequences, we report direct molecular evidence that DOBV in Germany is represented by a genetic lineage associated with *A. agrarius* (DOBV-Aa). In contrast, we found no evidence for the occurrence of DOBV-Af in *A. flavicollis* or other *Apodemus* species from Germany. Consistent with the geographic distribution of *A. agrarius* (11) and the report of human DOBV disease exclusively in northern and northeastern Germany, this finding may confirm DOBV-Aa as the sole causative agent of DOBV infections in Germany (4; Robert Koch-Institut, SurvStat, www.rki.de).

Previously *A. agrarius*-associated Saaremaa virus was experimentally shown to be able to infect *A. agrarius* and *A. flavicollis* mice (12). We report multiple natural spillover infections of *A. flavicollis* by a DOBV strain originally hosted by *A. agrarius*. The observed spillover infections represent a crucial prerequisite for genetic reassortment. This observation is in contrast to other reports from Slovenia and Slovakia where, although *A. agrarius* and *A. flavicollis* are occurring sympatrically, *A. flavicollis*

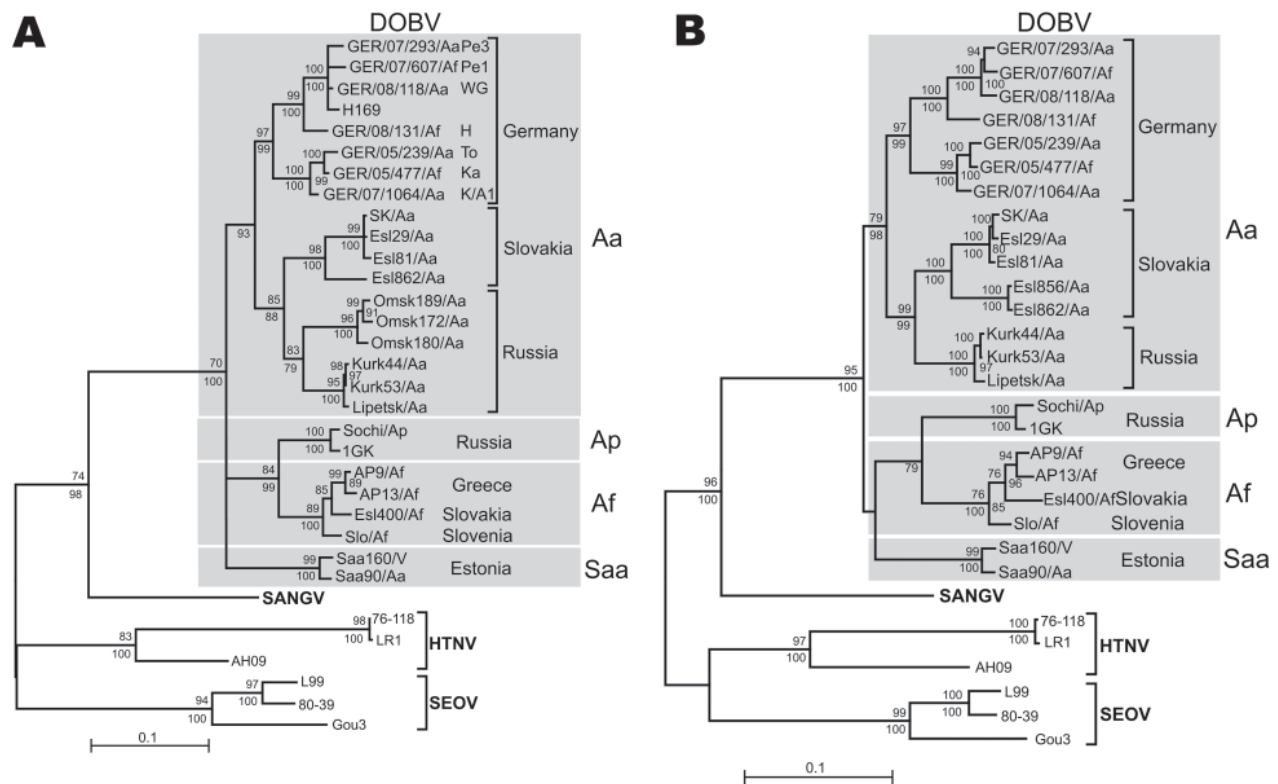


Figure 2. Maximum-likelihood (ML) phylogenetic trees of Dobrava-Belgrade virus (DOBV) based on partial small (S) segment nucleotide sequences of 559 nt (position 377–935) (A) and complete nucleocapsid protein coding nucleotide sequences (S segment open reading frame) (B). The ML trees (Tamura-Nei evolutionary model) were calculated using TREE-PUZZLE package (www.tree-puzzle.de). Scale bars indicate an evolutionary distance of 0.1 substitutions per position in the sequence. Values above the branches represent PUZZLE support values. Values below the branches are bootstrap values of the corresponding neighbor-joining tree (Tamura-Nei evolutionary model) calculated with the PAUP* software (paup.csit.fsu.edu) from 10,000 bootstrap pseudoreplicates. Only values $\geq 70\%$ (considered significant) are shown. Different DOBV lineages are indicated by gray boxes. SANGV, Sangassou virus; HTNV, Hantaan virus; SEOV, Seoul virus; Saa, Saaremaa virus; Aa, *Apodemus agrarius*; Ap, *A. ponticus*; Af, *A. flavicollis*. WG, district Lüneburg, Lower Saxony (LS); Pe1 and Pe3, district Güstrow; H, district Nordvorpommern, K/A1, district Demmin, all Mecklenburg-Western Pomerania (MWP); To and Ka, district Ostprignitz-Ruppin, Brandenburg (BB). Before tree construction, automated screening for recombination between the S segment sequences was performed using program RDP3 (15), which used 6 recombination detection programs: Bootscan, Chimeric, GENECONV, MaxChi, RDP, and SiScan with their default parameters. No putative recombinant regions could be conclusively detected by ≥ 3 programs and subsequently verified by phylogenetic trees.

is exclusively carrying the DOBV-Af and *A. agrarius* the DOBV-Aa lineage (4,13). In contrast to our observations, single DOBV-Af spillover infections of *A. sylvaticus* and *Mus musculus* have been reported previously (14).

The phylogenetic analyses demonstrated 2 well-separated clusters within the DOBV-Aa lineage. These rodent-derived DOBV sequences in Germany represent a major contribution to the DOBV genomics and phylogenetics. Future investigations should help to identify specific features of these DOBV-Aa strains resulting in its frequent spillover to *A. flavicollis* and to prove a putative adaptation of DOBV-Aa on *A. flavicollis* after spillover, as well as possible reassortment processes.

Acknowledgments

We kindly acknowledge the support of the various partners in the network “Rodent-borne pathogens,” additional collaborators from different parts of Germany, and Dörte Kaufmann, Daniel Balkema, and Heike Lerch.

This work was supported by the Bundesministerium für Ernährung, Landwirtschaft und Verbraucherschutz, grant number 07HS027 (to R.G.U.); by the Deutsche Forschungsgemeinschaft, grant no. KR 1293/9-1 (to D.H.K.); by the Slovak Scientific Grant Agency VEGA, grant number 2/0189/09 (to B.K.), by the Förderverein of the Friedrich-Loeffler-Institut (to M.S.), and by the Paul und Ursula Klein-Stiftung (to J.S.C.).

Mr Schlegel is a doctoral student at the Friedrich-Loeffler-Institut. His research interests are the ecology, molecular evolution, and pathogenesis of rodent-borne viruses.

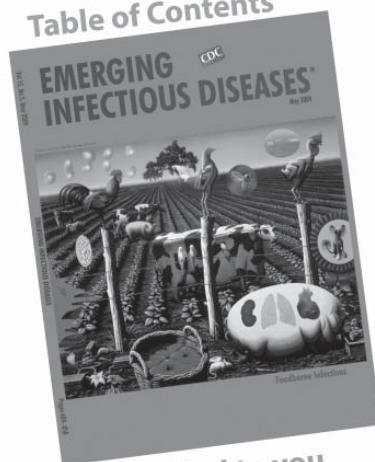
References

1. Avsic-Zupanc T, Petrovec M, Furlan P, Kaps R, Elgh F, Lundkvist A. Hemorrhagic fever with renal syndrome in the Dolenjska region of Slovenia—a 10-year survey. *Clin Infect Dis*. 1999;28:860–5. DOI: 10.1086/515185
2. Krüger DH, Ulrich R, Lundkvist Å. Hantavirus infections and their prevention. *Microbes Infect*. 2001;3:1129–44. DOI: 10.1016/S1286-4579(01)01474-5
3. Klempa B, Tkachenko EA, Dzagurova TK, Yunicheva YV, Morozov VG, Okulova NM, et al. Hemorrhagic fever with renal syndrome caused by 2 lineages of Dobrava hantavirus, Russia. *Emerg Infect Dis*. 2008;14:617–25. DOI: 10.3201/eid1404.071310
4. Sibold C, Ulrich R, Labuda M, Lundkvist Å, Martens H, Schütt M, et al. Dobrava hantavirus causes hemorrhagic fever with renal syndrome in central Europe and is carried by two different *Apodemus* mice species. *J Med Virol*. 2001;63:158–67. DOI: 10.1002/1096-9071(20000201)63:2<158::AID-JMV1011>3.0.CO;2-#
5. Klempa B, Stanko M, Labuda M, Ulrich R, Meisel H, Krüger DH. Central European Dobrava hantavirus isolate from striped field mouse, *Apodemus agrarius*. *J Clin Microbiol*. 2005;43:2756–63. DOI: 10.1128/JCM.43.6.2756-2763.2005
6. Sjölander KB, Golovljova I, Vasilenko V, Plyusnin A, Lundkvist A. Serological divergence of Dobrava and Saaremaa hantaviruses: evidence for two distinct serotypes. *Epidemiol Infect*. 2002;128:99–103.
7. Meisel H, Lundkvist Å, Gantzer K, Bär W, Sibold C, Krüger DH. First case of infection with hantavirus Dobrava in Germany. *Eur J Clin Microbiol Infect Dis*. 1998;17:884–5. DOI: 10.1007/s100960050214
8. Klempa B, Schütt M, Auste B, Ulrich R, Meisel H, Krüger DH. First molecular identification of human Dobrava virus infection in Central Europe. *J Clin Microbiol*. 2004;42:1322–5. DOI: 10.1128/JCM.42.3.1322-1325.2004
9. Essbauer S, Schmidt J, Conraths FJ, Friedrich R, Koch J, Hautmann W, et al. A new Puumala hantavirus subtype in rodents associated with an outbreak of nephropathia epidemica in South-East Germany in 2004. *Epidemiol Infect*. 2006;134:1333–44. DOI: 10.1017/S0950268806006170
10. Koehler TD, Thomas WK, Meyer A, Edwards SV, Pääbo S, Villablan CA, et al. Dynamics of mitochondrial DNA evolution in animals: Amplification and sequencing with conserved primers. *Proc Natl Acad Sci U S A*. 1989;86:6196–200. DOI: 10.1073/pnas.86.16.6196
11. Mitchell-Jones AJ, Amori G, Bogdanowicz W, Krystufek B, Reijnders PJH, Spitzenberger F, et al. The atlas of European mammals. London: Academic Press; 1999.
12. Klingström J, Heyman P, Escutenaire S, Sjölander KB, De Jaegere F, Henttonen H, et al. Rodent host specificity of European hantaviruses: evidence of Puumala virus interspecific spillover. *J Med Virol*. 2002;68:581–8. DOI: 10.1002/jmv.10232
13. Avsic-Zupanc T, Nemirov K, Petrovec M, Trilar T, Poljak M, Vaheri A, et al. Genetic analysis of wild-type Dobrava hantavirus in Slovenia: co-existence of two distinct genetic lineages within the same natural focus. *J Gen Virol*. 2000;81:1747–55.
14. Weidmann M, Schmidt P, Vackova M, Krivanec K, Munclinger P, Hufert FT. Identification of genetic evidence for Dobrava virus spillover in rodents by nested reverse transcription (RT)-PCR and TaqMan RT-PCR. *J Clin Microbiol*. 2005;43:808–12. DOI: 10.1128/JCM.43.2.808-812.2005
15. Martin DP, Williamson C, Posada D. RDP2: recombination detection and analysis from sequence alignments. *Bioinformatics*. 2005;21:260–2. DOI: 10.1093/bioinformatics/bth490

Address for correspondence: Rainer G. Ulrich, Friedrich-Loeffler-Institut, Federal Research Institute for Animal Health, Office International des Epizooties, Collaborating Centre for Zoonoses in Europe, Institute for Novel and Emerging Infectious Diseases, Südufer 10, D-17493 Greifswald-Insel Riems, Germany; email: rainer.ulrich@fli.bund.de

All material published in Emerging Infectious Diseases is in the public domain and may be used and reprinted without special permission; proper citation, however, is required.

Table of Contents



Emailed to you

GovDelivery

Manage your email alerts so you only receive content of interest to you.

Sign up for an Online Subscription:

www.cdc.gov/ncidod/eid/subscrib.htm

Dobrava-Belgrade Virus Spillover Infections, Germany

Technical Appendix

Table 1. Summary of the serologic and reverse transcription-PCR (RT-PCR) investigations of all serologically and/or RT-PCR-positive *Apodemus* mice*

Federal state and district	Trapping site	Rodent species (sex)	Rodent no.	DOBV (Slo)-IgG-ELISA†	FRNT‡		Nested RT-PCR L segment	Obtained sequences		
					DOBV-Aa (SK)	DOBV-Af (Slo)		DOBV S segment	DOBV M segment	cyt b (partial)
Lower Saxony Lüneburg	WG	Aa (F)	GER/08/124/Aa	++	80	20	Pos	Partial (nt 1-934); identical to GQ205407	ND	GQ260183
		Aa (M)	GER/08/118/Aa	+++	40	40	Pos	GQ205407 Complete	GQ205412 complete	GQ260182
		Aa (F)	GER/08/125/Aa	+++	ND	ND	pos	Partial (nt 1-934); identical to GQ205407	ND	GQ260184
Mecklenburg-Western Pomerania Demmin	K/A1	Aa (M)	GER/07/1064/Aa	+++	40	20	pos	GQ205404 complete	ND	GQ260176
		Af (M)	GER/07/1058/Af	++	640	80	pos	Partial (nt 219-1675); identical to GQ205404	ND	GQ260175
		Aa (F)	GER/07/1081/Aa	++	ND	ND	pos	ND	ND	GQ260177
		Aa (M)	GER/07/1029/Aa	neg	ND	ND	pos	ND	ND	GQ421162
		Aa (F)	GER/07/1027/Aa	ND	ND	ND	pos	ND	ND	GQ421163
		Af (F)	GER/07/992/Af	neg	ND	ND	pos	ND	ND	GQ421166
		Aa (F)	GER/08/83/Aa	++	80	40	pos	ND	ND	GQ260180
Nordvor-pommern	H	Aa (F)	GER/08/79/Aa	+	ND	ND	pos	ND	ND	GQ260178
		Aa (M)	GER/08/80/Aa	+	ND	ND	pos	ND	ND	GQ260179
		Aa (M)	GER/08/84/Aa	+	ND	ND	pos	ND	ND	GQ260181
		Af (M)	GER/08/131/Af	+	10	<10	pos	GQ205408 complete	GQ205413 complete	GQ260185
		Aa (M)	GER/08/82/Aa	neg	ND	ND	pos	ND	ND	GQ421164
		Af	GER/08/	neg	ND	ND	pos	ND	ND	GQ421165

Güstrow	Pe3	(M) Aa	133/Af GER/07/ 293/Aa	+++	640	80	pos	GQ205401 complete	GQ205409 complete	GQ260171
		(M) Aa	GER/07/ 634/Aa	+	ND	ND	neg	ND	ND	GQ260174
		(F) Aa	GER/07/ 372/Aa	+	ND	ND	neg	ND	ND	GQ260172
	Pe1	(M) Af	GER/07/ 607/Af	++	<10	<10	pos	GQ205402 complete	GQ205410 complete	GQ260186
		(F) Aa	GER/07/ 424/Aa	++	ND	ND	pos	GQ205403 complete	ND	GQ260173
		(M) Aa	GER/05/ 239/Aa	+++	ND	ND	pos	GQ205405 complete	ND	GQ260167
Brandenburg Ostprignitz-Ruppin	To	(M) Aa	GER/06/ 44/Aa	+	ND	ND	neg	ND	ND	GQ260169
		(M) Aa	GER/06/ 49/Aa	+	ND	ND	neg	ND	ND	GQ260170
		(F) Aa	GER/05/ 477/Af	+	ND	ND	pos	GQ205406 complete	GQ205411 complete	GQ260168
	Ka	(M) Af	GER/05/ 477/Af	+	ND	ND	pos	GQ205406 complete	GQ205411 complete	GQ260168
		(M) Aa	GER/05/ 239/Aa	+++	ND	ND	pos	GQ205405 complete	ND	GQ260167

*FRNT, focus reduction neutralization test; DOBV, *Dobrava-Belgrade virus*; Aa, *Apodemus agrarius*; Af, *A. flavicollis*; Slo, strain Slovenia; SK, strain Slovakia; *cyt b*, *cytochrome b*; ND, not done; nt, nucleotide; neg, negative; pos, positive.

†Optical density values: +++, ≥ 2.0 ; ++, 1.9-1.0; +, 0.9-0.2; neg, < lower cut-off (in average 0.041).

‡Endpoint titers.

Table 2. Pairwise nucleotide and amino acid sequence divergence between the entire N- and GPC-encoding DOBV S- and M-segment sequences originating from Germany to those from other regions in Europe*

Segment and strain	Species	Country (site)	% identity with strain												
			1	2	3	4	5	6	7	8	9	10	11	12	13
S segment ORF															
1. GER/07/293	Aa	GER/Pe3	–	98.5	91.2	98.2	95.1	89.1	87.4	87.2	87.1	87.3	89.0	85.9	91.7
2. GER/07/607	Af	GER/Pe1	99.7	–	91.8	98.0	95.3	88.7	86.9	87.1	87	87.1	89.3	85.7	91.2
3. GER/05/477	Af	GER/Ka	98.8	99.0	–	91.2	91.9	88.9	87.5	86.5	86.8	86.0	89.9	86.7	91.4
4. GER/08/118	Aa	GER/WG	99.3	99.5	98.6	–	94.7	88.8	87.1	87.1	87	87.2	88.6	85.7	91.2
5. GER/08/131	Af	GER/H	99.5	99.7	98.8	99.3	–	89.3	87.4	88	88	88.1	89.6	87.5	91.4
6. SK/Aa	Aa	SVK	98.8	99.0	98.6	98.6	98.8	–	86.4	86.4	85.2	84.6	91.3	86.5	89.4
7. Saa/160V	Aa	EST	96.9	97.2	97.6	96.7	97.4	96.7	–	87.7	87.6	87.4	87.1	84.8	89.7
8. Slo/Af	Af	SVN	97.6	97.9	97.4	97.4	97.6	97.4	96.9	–	96	95.1	87.5	88.2	87.5
9. AP/Af19	Af	GRC	98.3	98.6	98.1	98.1	98.3	98.1	97.2	99.3	–	96.4	87.1	87.6	87.1
10. Esl400/Af	Af	SVK	98.1	98.3	97.9	97.9	98.1	97.9	96.9	99	99.7	–	87.1	87.4	86.6
11. Lipetsk/Aa	Aa	RUS	98.1	98.3	97.9	98.3	98.1	98.8	96.0	96.7	97.4	97.2	–	86.8	89.3
12. Sochi/Ap	Ap	RUS	97.6	97.9	97.4	97.4	98.1	97.4	96.2	97.6	97.9	97.6	96.7	–	86.8
13. Lolland/Aa1403	Aa	DNK	99.3	99.5	99.0	99.0	99.7	99.0	97.6	97.9	98.6	98.3	98.3	98.3	–
M segment ORF															
1. GER/07/293	Aa	GER/Pe3	–	97.9	91.7	97.5	93.2	87.0	86.9	82.8	82.1	82.6	86.7	79.3	–
2. GER/07/607	Af	GER/Pe1	99.1	–	91.9	97.9	93.5	87.4	87.2	83.4	82.4	83.2	87.1	79.5	–
3. GER/05/477	Af	GER/Ka	98.3	98.6	–	92.0	91.7	86.5	87.0	83.3	82.9	83.3	87.2	80.1	–
4. GER/08/118	Aa	GER/WG	98.7	99.2	98.4	–	93.0	86.9	87.4	83.3	82.5	83.0	86.9	79.7	–
5. GER/08/131	Af	GER/H	98.2	98.6	98.8	98.4	–	86.6	87.0	83.1	82.3	83.5	87.3	80	–
6. SK/Aa	Aa	SVK	96.0	96.4	96.2	96.2	96.4	–	87.1	82.5	82.3	82.5	87.6	79.5	–
7. Saa/160V	Aa	EST	95.7	96.0	95.7	95.8	95.9	95.8	–	82.2	82.4	82.1	86.4	79.1	–
8. Slo/Af	Af	SVN	93.6	94.0	94.1	93.8	94.0	93.6	94.1	–	93.7	92.8	83.5	80.4	–
9. AP/Af19	Af	GRC	93.7	94.1	94.2	93.9	94.0	93.6	94.1	98.6	–	93.2	83.2	80.4	–
10. Esl400/Af	Af	SVK	94.0	94.4	94.5	94.1	94.3	94.0	94.3	98.9	99.0	–	83.6	80.8	–
11. Lipetsk/Aa	Aa	RUS	96.7	97.1	96.7	97.0	96.6	97.0	96.2	94.0	94.1	94.4	–	80.6	–
12. Sochi/Ap	Ap	RUS	90.6	91.0	90.9	90.7	90.8	90.5	90.3	93.3	93.3	93.8	91.4	–	–

*Values above the diagonal are nucleotide sequence differences and values below the diagonal are amino acid differences. ORF, open reading frame.

