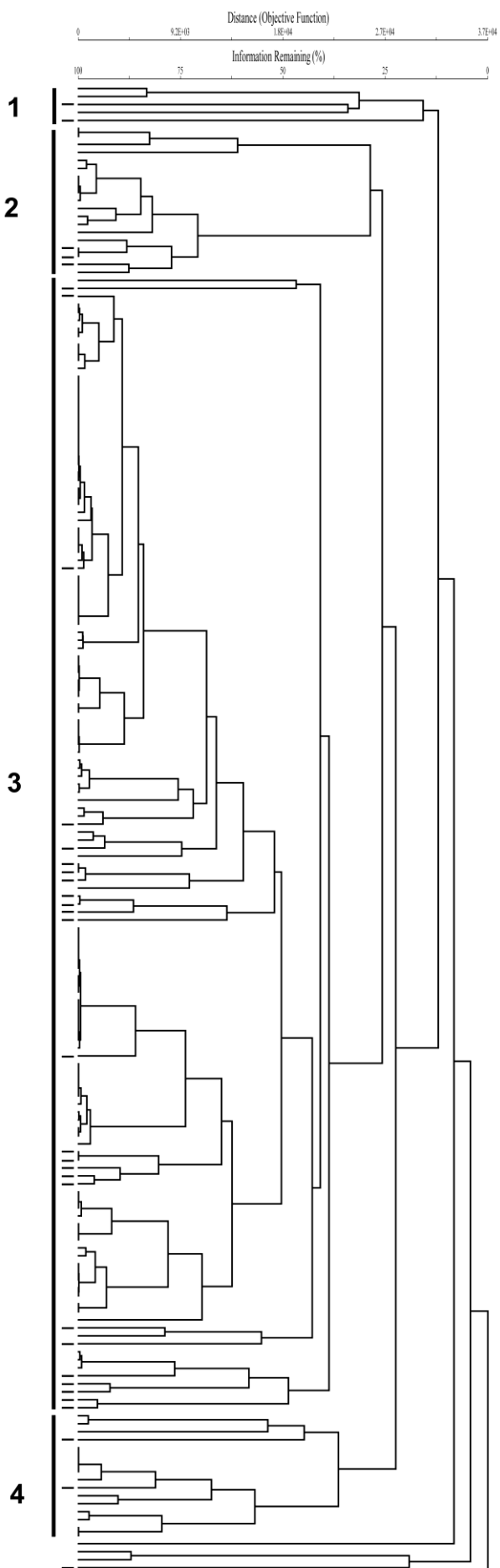


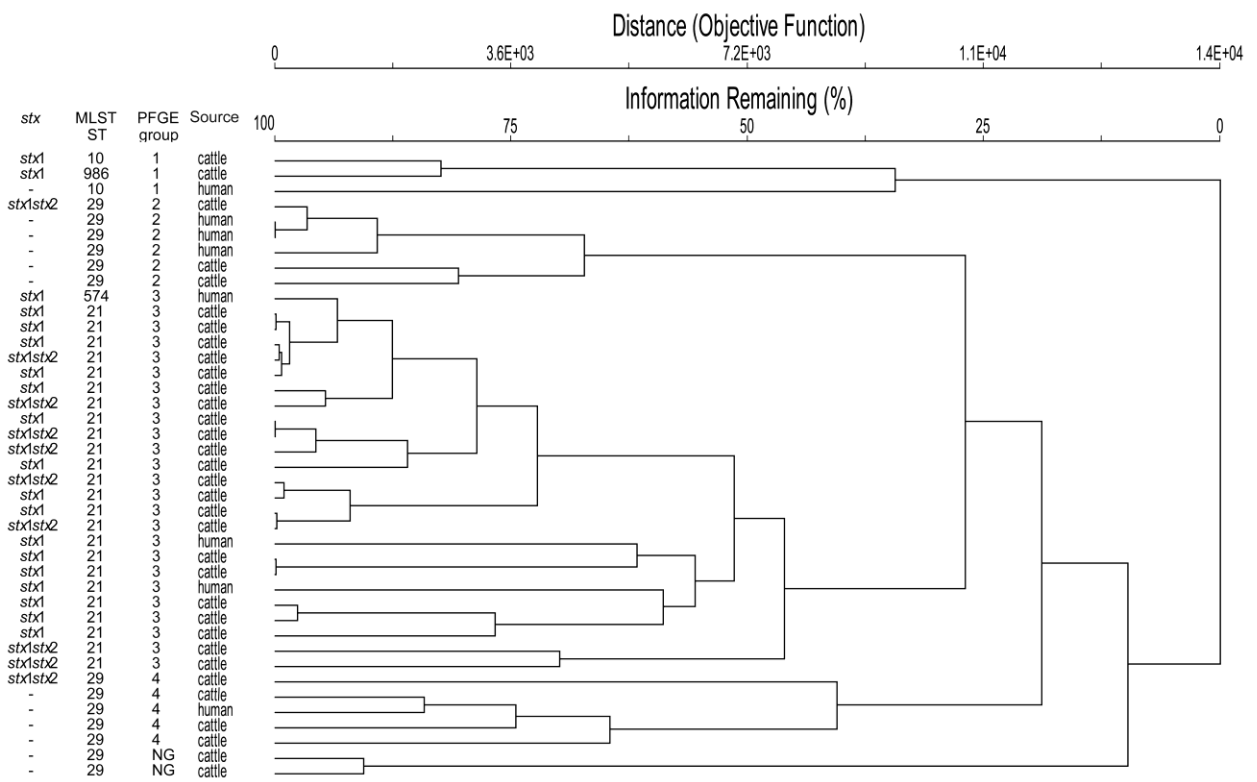
Pathogenic Potential to Humans of Bovine *Escherichia coli* O26, Scotland

Technical Appendix

Analysis of Shiga toxin-producing *Escherichia coli* O26 isolates in cattle and humans from Scotland, England, Ireland, Belgium, Sweden, and Italy.



Technical Appendix Figure 1. Dendrogram of 152 cattle and 33 humans with Shiga toxin-producing *Escherichia coli* O26 isolates from Scotland, England, Ireland, Belgium, Sweden, and Italy (Table 1). Horizontal line denotes the position of isolates from humans. Scale bar indicates degree of similarity (%).



Technical Appendix Figure 2. Shiga toxin-producing *Escherichia coli* O26 isolated from cattle and humans in Scotland during 2002–2004. stx, Shiga toxin gene; MLST, multilocus sequence typing. Scale bar indicates degree of similarity (%). NG, no group assigned.