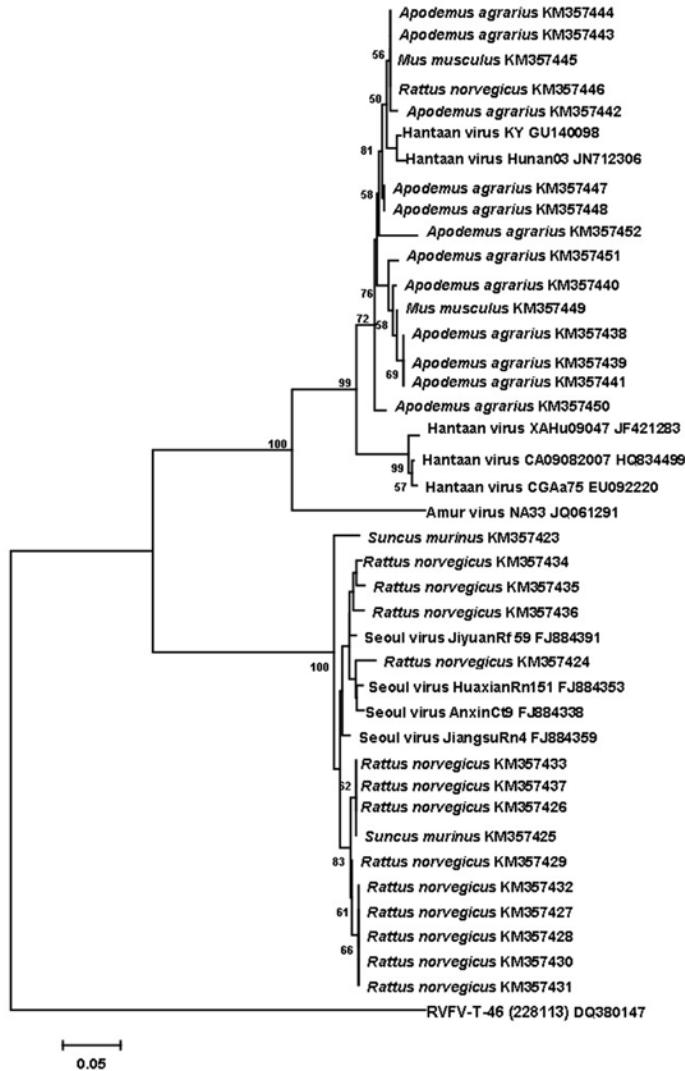


# Reservoir Host Expansion of Hantavirus, China

## Technical Appendix



Technical Appendix Figure. Phylogenetic tree of hantaviruses from small mammals, Jiaonan County, China, December 2012–November 2013. A maximum-likelihood tree was constructed by using MEGA5 software (<http://www.megasoftware.net>) with 2,000 replicates for bootstrap testing. The tree was rooted with Rift Valley fever virus (GenBank accession no. DQ380147.1). Scale bar indicates nucleotide substitutions per site.