

Immune Responses to Invasive Group B Streptococcal Disease in Adults

Morven S. Edwards, Marcia A. Rench, C. Daniela Rinaudo, Monica Fabbrini, Giovanna Tuscano, Giada Buffi, Erika Bartolini, Stefano Bonacci, Carol J. Baker, Immaculada Margarit

Immunization of nonpregnant adults could help prevent invasive group B *Streptococcus* (GBS) infections, but adult immune responses have not been investigated. We defined capsular polysaccharide (CPS) and pilus island (PI) surface antigen distribution and expression and immune responses to GBS infection in nonpregnant adults. Prospective surveillance from 7 hospitals in Houston, Texas, USA, identified 102 adults with GBS bacteremia; 43% had skin/soft tissue infection, 16% bacteremia without focus, and 12% osteomyelitis. CPS-specific IgG was determined by ELISA and pilus-specific IgG by multiplex immunoassay. CPS types were Ia (24.5%), Ib (12.7%), II (9.8%), III (16.7%), IV (13.7%), and V (12.7%); 9.8% were nontypeable by serologic methods. Pili, expressed by 89%, were most often PI-2a. CPS and pilus-specific IgG increased during convalescence among patients with strains expressing CPS or PI. All GBS expressed CPS or PI; 79% expressed both. Increased antibodies to CPS and PI during recovery suggests that GBS bacteremia in adults is potentially vaccine preventable.

In the United States, group B *Streptococcus* (GBS) has emerged as a frequent cause of invasive infection in nonpregnant adults with underlying medical conditions. The incidence of GBS disease among these patients increased from 3.6 cases/100,000 persons in 1990 to 7.3 cases/100,000 persons in 2007 ($p < 0.001$) (1). This increase has occurred among adults 18–64 years of age and ≥ 65 years of age (2). The Centers for Disease Control and Prevention Active Bacterial Core surveillance estimated that 28,000 cases of invasive GBS disease occurred in the United States during 2014 and that 25,900 (93%) cases occurred beyond infancy, primarily in nonpregnant adults (3). Also, adults account for 90% of the estimated 1,660 annual deaths attributable to GBS infection.

Most cases of invasive GBS disease are caused by 5 capsular types (Ia, Ib, II, III, and V), which together

accounted for 88% of cases in nonpregnant adults during 1999–2005 (2). The emergence of serotype V in the 1990s was first noted among GBS isolates from nonpregnant adults (4,5). During 1999–2005, infection with the formerly rare serotype IV increased among nonpregnant adults (1). As with invasive pneumococcal disease, the capsule of GBS is a major virulence factor targeted by candidate GBS capsular polysaccharide (CPS)–protein conjugate vaccines; thus, knowledge of prevalence of these antigens is critical for vaccine development. Similarly, another surface component of GBS critical to virulence, the pilus islands (PIs), are limited in number but are found in all strains and are promising as GBS vaccine candidates (6–8).

Among infants, use of antenatal screening and intrapartum antimicrobial prophylaxis has markedly reduced early-onset (0–6 days of age) but not late-onset (7–89 days of age) GBS disease. Immunization of pregnant women offers the best strategy for prevention of early- and late-onset invasive GBS disease in infants. Immunization of adults also potentially could reduce the GBS disease burden in the United States, but data are needed regarding immune responses during convalescence from invasive disease (9). We characterized CPS and PI genotypes and expression among isolates and explored immune responses to these surface antigens during convalescence from invasive infection in a cohort of nonpregnant adults.

Methods

Participants and Setting

We identified cases of GBS bacteremia by conducting prospective, laboratory-based surveillance from March 2012 through October 2014 at 4 Texas Medical Center hospitals (Houston, TX, USA) and 3 suburban affiliates of 1 Texas Medical Center hospital, all of which provided uniform diagnostic evaluations and medical care. Invasive infection was defined as isolation of GBS from blood or cerebrospinal fluid. Potential cases were identified daily at participating hospital laboratories. Nonpregnant adults ≥ 18 years of age with invasive GBS infection were eligible for enrollment. We excluded those with symptom duration > 7 days,

Author affiliations: Baylor College of Medicine, Houston, Texas, USA (M.S. Edwards, M.A. Rench, C.J. Baker); GSK Vaccines, S.r.l., Siena, Italy (C.D. Rinaudo, M. Fabbrini, G. Tuscano, G. Buffi, E. Bartolini, S. Bonacci, I. Margarit)

DOI: <http://dx.doi.org/10.3201/eid2211.160914>

HIV infection, or polymicrobial bacteremia. An investigator contacted the physician of record for approval before approaching the patient. Study personnel then discussed the study and eligibility with patients and obtained informed consent. The study received approval by the Institutional Review Boards for Human Research at Baylor College of Medicine and participating hospitals' administrative processes.

Specimen Collection

A blood sample was collected from each participant on the day of hospital admission or at enrollment. Demographic and clinical data were recorded from the medical record. Convalescent-phase blood was collected at a mean of 3 (range 2–4) weeks from the date of positive culture. Blood was transported to the investigators' laboratory (Baylor College of Medicine, Houston, TX, USA) where serum was separated, aliquoted, and stored at -80°C until sent to GSK Vaccines (Siena, Italy) for testing.

Bacterial Strains, Media, and Growth Conditions

GBS isolates from each patient were obtained from hospital laboratories. They were then grown in Todd Hewitt Broth (Becton Dickinson, Franklin Lakes, NJ, USA) at 35°C – 37°C for serotyping and inoculated directly from plates into trypticase soy broth with 20% glycerol for storage at -80°C .

Serotyping of GBS Isolates

Capsular typing was performed for all isolates. Both the capillary precipitin method (10) and the Strep-B-Latex rapid agglutination method (Statens Serum Institut, Copenhagen, Denmark) were used.

Genotyping and Pilus Typing of GBS Isolates

Genomic DNA was prepared from GBS cultures by a standard protocol for gram-positive bacteria by mutanolysin treatment of bacteria and use of a GenElute Bacterial Genomic DNA Kit (Sigma-Aldrich, Milan, Italy) according to the manufacturer's instructions. Capsular gene typing was performed for all isolates by multiplex PCR (11) modified by including a primer pair specific for detection of serotype IX. Pilus genes were PCR amplified by using primers specifically annealed to conserved genomic regions external to the coding sequences as described (8).

Multilocus Sequence Typing

Multilocus sequence typing was performed as described (<http://pubmlst.org/sagalactiae/>). Clonal complexes (CCs) were assigned by global optimal eBURST analysis of multilocus typing data (12).

Fluorescence-Activated Cell Sorter Analysis

Fluorescence-activated cell sorter (FACS) analysis to assess surface expression of CPS and pilus proteins was performed

as reported (13,14). In brief, paraformaldehyde-fixed bacteria were incubated with mouse monoclonal antibodies or immune polyclonal serum specific for CPS type and pilus proteins (14). Cells were stained with R-phycoerythrin-conjugated F(ab)₂ goat anti-mouse IgG (Jackson ImmunoResearch Laboratories, West Grove, PA, USA) and analyzed with a FACS CANTO II instrument (Becton Dickinson) and FlowJo Software (Tree Star Inc., Ashland, OR, USA).

ELISA

Serum CPS-specific IgG was determined by ELISA. Microtiter plates (96-well) (Nunc MaxiSorp; Sigma Aldrich, St. Louis, MO, USA) were coated overnight at 2°C – 8°C with 100 ng of purified CPS Ia, Ib, II, III, IV, or V conjugated to human serum albumin-adipic acid dihydrazide in phosphate-buffered saline (PBS) at pH 7.4. After washing with 0.05% Tween-20 in PBS (PBST), plates were incubated for 90 min with 2% bovine serum albumin in PBST. Serial 2-fold dilutions of test and standard serum in 2% bovine serum albumin in PBST were added, incubated 1 h, and washed. After alkaline phosphatase-conjugated anti-mouse IgG (1:1000 in PBST) was added, plates were incubated for 90 min and then washed. After incubation with p-nitrophenylphosphate (4.0 mg/mL), the reaction was stopped with EDTA 7% (wt/vol) and absorbance was measured at 405 nm. The concentration of specific IgG was determined with a standard titration curve and expressed as micrograms per milliliter (CPS Ia, Ib, III, and V) or ELISA units per milliliter (CPS IV). Standard samples containing 47.2, 35.4, 30.4, 83.5, or 11.6 $\mu\text{g}/\text{mL}$ of anti-CPS Ia, Ib, II, III, and V IgG were prepared by pooling serum from women immunized with the specific CPS conjugated to tetanus toxoid (15). The CPS IV standard was prepared by pooling unweighted high-titer serum from study participants. The lower limit of quantitation was 0.156 $\mu\text{g}/\text{mL}$ for types Ia, Ib, and V; 0.250 $\mu\text{g}/\text{mL}$ for types II and III; and 12.5 ELISA units/mL for type IV. A titer corresponding to one half of the lower limit of quantitation was assigned to serum with values below the lower limit of quantitation.

Multiplex Immunoassay

Pilus protein-specific IgG was measured by multiplex immunoassay that used recombinant pilus proteins BP-1, BP-2a, and BP-2b coupled to magnetic beads and expressed as relative Luminex units (RLU) per milliliter. A total of 20 μg of each protein was coupled to carboxyl groups of a specific MagPlex bead set (Luminex Corporation, Austin, TX, USA). Three sets of coupled beads (3,000 beads/region/well) were added to each dilution of the standard curve and serum samples (1:100 and 6 serial 2-fold dilutions), incubated for 90 min in the dark, with shaking at 700 rpm. Beads were washed twice with 200 μL of PBS and incubated with phycoerythrin-conjugated goat anti-human IgG F(ab')₂ (Jackson ImmunoResearch Laboratories) at 5

$\mu\text{g/mL}$ for 1 h in the dark, with shaking at 700 rpm. After a second wash, beads were suspended in 100 μL PBS.

Analysis was performed on a FlexMAP3D instrument by using Bio-Plex Manager software version 6.0 (Bio-Rad, Hercules, CA, USA). For each analyte, median fluorescent intensity was converted to RLU per milliliter by interpolation from a 5-parameter logistic standard curve for every bead-region/standard. Standard serum for determination of human IgG specific for GBS pilus proteins was obtained by pooling hyperimmune serum from persons colonized by GBS. A titer of 1 RLU/mL was arbitrarily assigned to the highest concentration point of the calibration curve. The lower limit of quantitation for the pilus proteins was 0.14 RLU/mL for BP-1 and 0.41 RLU/mL for BP-2a and BP-2b.

Statistical Analyses

Clinical features, by patient age group, were compared by using the 2-tailed Fisher exact test. Antibody responses to CPS or pilus proteins were assessed by paired *t*-test on log-transformed data. CPS-specific IgG concentrations were compared for homologous and heterologous (Mann–Whitney U test) GBS serotypes.

Results

Participant Characteristics

Participants comprised 102 nonpregnant adults (race/ethnicity 44% white, 30% black, 25% Hispanic, 1% other) with GBS bacteremia. Mean age was 59.5 years (median 59.7, range 27–91 years). Most (75%) were from Texas Medical Center hospitals. Most (59%) were male. One patient also had meningitis. All patients had ≥ 1 condition that enhanced risk for invasive GBS disease, including diabetes mellitus (59%), obesity (57%), cardiovascular disease (45%), liver disease (20%), kidney disease (19%), or cancer (10%) (1,2). The most common expressions of illness were skin/soft tissue infection (43%) bacteremia without focus of infection (16%), osteomyelitis (12%), and endocarditis or endovascular infection (8%). Four patients died, 2 of them before convalescent-phase serum was obtained.

Characteristics of Infecting GBS Isolates

Of 102 isolates, 92 expressed 1 of 6 capsular types. CPS type Ia accounted for 24.5% of isolates, followed by types III (16.7%), IV (13.7%), V (12.7%), Ib (12.7%), and II (9.8%) (Figure 1, panel A). The genotype and serotype for these 92 isolates were concordant. CPS expression was undetectable by latex agglutination and capillary precipitin methods for 10 (9.8%) isolates; 7 were identified by FACS analysis as type Ia (1), II (3), or V (3). The genotypes for the 10 isolates were Ia (1), II (3), and V (6). Genotypes and CCs for all 102 isolates are displayed (Figure 1, panel B); 77% of these isolates were 1 of the 3 lineages (CC1,

CC19, or CC23). The hypervirulent CC (CC17) accounted for 35% of type III isolates. Among type IV isolates, CC1 (57%) and CC23 (43%) were exclusively represented.

PI genes were detected in all isolates (Figure 1, panels C and D). Most carried genes for PI-1 and PI-2a (56%) or PI-2a alone (32%). According to flow cytometry, 89% of isolates expressed *in vitro* ≥ 1 pilus type on their surface, most often PI-2a alone or with PI-1. PI-2b was expressed only by type IV strains or in combination with PI-1 by type III strains. Genes for PI-1 and PI-2a were present on 8 of 11 isolates not expressing pili. The CPS types for the 11 strains that did not express pili were Ia (1), Ib (2), II (4), IV (2), and V (2). All GBS strains expressed either CPS or pili, and 79% expressed both surface antigens.

Immune Responses

Paired acute- and convalescent-phase serum samples were available from 97 patients, but only 87 were infected with CPS-expressing strains. A significant increase in CPS-specific IgG was observed during the convalescent phase for each of the 6 GBS types causing invasive disease in these 87 patients (Table). However, the concentration of antibodies to CPS in acute- and convalescent-phase serum varied widely (Figure 2). When CPS-specific IgG was expressed as ≥ 4 -fold increases during convalescence, an immune response to their infecting serotype was detected for 50% (Ia), 31% (Ib), 50% (II), 41% (III), 42% (IV), and 46% (V) of patients.

For all patients, CPS-specific IgG concentrations in convalescent-phase serum samples were compared with the infecting GBS serotype and with heterologous GBS serotypes (Figure 3). With the exception of type III, the means and interquartile ranges of CPS-specific IgG were significantly higher ($p < 0.001$) for the infecting GBS serotype than for the other 5 serotypes, indicating that the CPS immune response in adults is capsular type specific.

PI-1-specific IgG increased significantly for the 35 patients infected with GBS strains expressing PI-1 when acute-phase serum (geometric mean concentration [GMC] 25.2 RLU/mL [range 0.57–765.0; 95% CI 12.2–52.0]) was compared with convalescent-phase serum (GMC 53.7 RLU/mL [range 0.5–4972.1; 95% CI 24.3–118.7]) ($p = 0.003$). Similarly, PI-2a-specific IgG increased significantly between acute illness (GMC 15.0 RLU/mL [range 0.8–606.5; 95% CI 10–22.5]) and convalescence (GMC 28.7 RLU/mL [range 0.8–1459.9; 95% CI 19.43.2]) for the 66 patients with infection caused by GBS isolates expressing this pilus type ($p < 0.001$) (Figure 4). Among the 12 patients infected with GBS strains expressing PI-2b, there was no significant PI-2b-specific IgG response (data not shown). We detected ≥ 4 -fold increases in pilus-specific IgG during convalescence in 20% (PI-1), 16.7% (PI-2a), and 25% (PI-2b) of patients. Among these 20 patients, response to their infecting CPS type was also ≥ 4 -fold for 14 (70%).

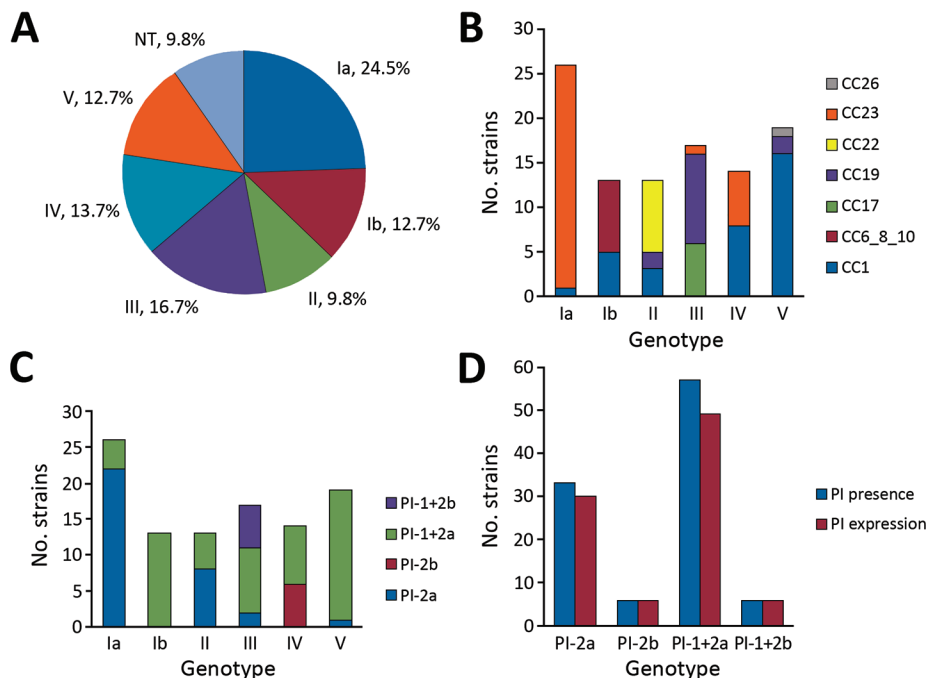


Figure 1. CPS type and PI distribution and expression in 102 group B *Streptococcus* isolates from adults with invasive infection, Houston, Texas, USA. A) CPS distribution of isolates by capillary precipitin method and latex agglutination assay (indicating CPS expression). B) Correlation between CC distribution and CPS genotype by PCR. C) PI and CPS distribution by genotype. D) Relationship between pilus genotype distribution and pilus expression in isolates expressing ≥ 1 pilus type on their surface. CC, clonal complex; CPS, capsular polysaccharide; NT, nontypeable; PI, pilus island.

Discussion

GBS is a common pathogen in nonpregnant adults (16). Skoff et al. (1) suggest that the increasing prevalence of chronic medical conditions might explain the increasing incidence of GBS disease among adults. Most patients in our cohort had underlying conditions, as has been noted previously (1,17–19). Skin/soft tissue infections were present in 43%, and the presentation was nonfocal for 16%, usually in patients with hepatic disease (1,2).

Our investigation led to 3 major findings. First, serotype IV GBS was a prominent cause of invasive disease, accounting for 13.7% of cases. Skoff et al. (1) noted that type IV cases increased from 0.2% during 1998–1999 to 5.7% during 2005–2006. Characterization of 549 strains from Canada during 2010–2014 indicated that 16.9% of cases with invasive disease were caused by serotype IV (20). In our cohort, 6 GBS types were responsible for at least 10% of cases, but only types Ia (24.5%) and III (16.7%) caused more infections than type IV. None of the cases reported here were caused by GBS types VI–IX; Skoff et al. (1) identified only 3 of these types among 1,933 isolates from nonpregnant adults. Invasive type IV GBS infections were clinically diverse and included bacteremia without focus (4 patients), skin and soft tissue infections (3), osteomyelitis (3), septic shock (1), endocarditis (1), arthritis (1), and urosepsis (1).

Second, our findings add to limited data regarding GBS virulence factors critical to invasive disease pathogenesis in adults. Most GBS isolates can be assigned to a small number of CCs, including CC1, CC10, CC17, CC19, and CC23 (21). Three major lineages (CC1, CC19, and CC23)

accounted for 77% of isolates from our cohort. These 3 CCs comprised 64% of isolates from nonpregnant adults in Sweden who had invasive infections during 1988–1997 (22). CC19, associated with less invasive type III strains in neonates, accounted for 63% of type III isolates in the patients reported here; the hypervirulent CC17 comprised only 33%, suggesting that less virulent strains may cause invasive disease in adults (23,24). Among type IV isolates, CC1 and CC23 were exclusively represented, extending the observations of Ferrieri et al (25) that type IV isolates from nonpregnant adults with invasive disease were CC1 and that those from invasive infection in infants were CC23. No type IV isolates belonged to the novel epidemic hypervirulent CC17 lineage resulting from the type III to type IV capsular switch (26,27). Teatero et al. (20) assert that emergence of serotype IV in Canada was driven by CC1 sequence type 459 strains, possibly linked to acquisition of resistance to tetracycline, macrolides, and lincosamides.

All strains isolated from the patients reported here expressed CPS, pili, or both surface-associated GBS virulence factors. For a subset of strains, expression was undetectable for CPS (10%) or pilus (11%). The proportion of nontypeable strains (assessed by conventional CPS typing methods) in our cohort was greater than the 6.5% reported by the Centers for Disease Control and Prevention during 2005–2006 (1). Also, the proportion of strains for which pilus expression was undetectable was slightly higher than the 6% reported for 289 GBS isolates from the United States and Italy, but these data represented infants and adults with either invasive infection or asymptomatic colonization (8).

Table. CPS-specific IgG responses for 87 nonpregnant adults with invasive GBS infection*

GBS type	No. patients†	CPS-specific IgG, GMC (range) [95% CI], µg/mL		p value‡
		Acute-phase sample	Convalescent-phase sample	
Ia	22	26.0 (0.39–609.1) [9.5–71.0]	137.6 (0.35–7,792.2) [50.4–375.6]	<0.001
Ib	13	9.3 (0.08–680.9) [1.6–55.6]	25.2 (0.08–650.5) [4.6–139.5]	0.035
II	10	11.6 (0.13–1,126.8) [1.2–113.6]	47.4 (0.61–2,279.9) [6.1–366.1]	0.032
III	17	1.5 (0.13–153.9) [0.53–4.0]	4.8 (0.13–584.4) [1.1–20.4]	0.044
V	13	3.2 (0.24–596.3) [0.51–19.9]	10.1 (0.43–4,182.0) [1.9–55.0]	0.003
IV§	12	409.5 (17.6–4,823.3) [133.3–1,257.5]	1,060.9 (149.4–9,085.2) [415.7–2,707.6]	0.022

*CPS, capsular polysaccharide; GBS, group B *Streptococcus*; GMC, geometric mean concentration.

†Excludes 10 patients with infection caused by GBS that did not express capsular polysaccharide, 3 for whom convalescent-phase samples were of insufficient quantity for analysis, and 2 who died before collection of convalescent-phase serum.

‡Paired *t*-test on log-transformed data.

§Results are expressed in ELISA units/mL.

Third, as a group, nonpregnant adults demonstrated an immune response to major virulence antigens after invasive GBS infection. CPS-specific IgG to each infecting CPS type and PI-1- or PI-2a-specific IgG almost always increased significantly in convalescent-phase serum. However, the immune response was complex; the range of antibody concentrations in acute- and convalescent-phase serum was broad, a pattern not found in neonates and infants, for whom low concentrations of CPS-specific IgG are uniformly found in acute-phase serum (28).

We observed several patterns of immune response. Between acute illness and convalescence, CPS-specific IgG increased by ≥ 4 -fold for 44% of patients. By comparison, CPS-specific IgG increased by ≥ 4 -fold in postimmunization serum from 80%–93% of healthy adults immunized with monovalent GBS conjugate vaccines representing CPS Ia, Ib, II, III, and V (29). For other patients, CPS-specific IgG in concentrations at the time of hospital admission were higher than the 0.5–3 µg/mL predicted to be protective against neonatal infection (30), suggesting that either the immune response was rapid or that an immune response to CPS is not as critical for nonpregnant adults

with invasive infection as it is for neonates. Wessels et al. (31) noted that the serum CPS-specific IgG to the infecting GBS isolate in adults with bacteremia was ≥ 3.5 µg/mL in 7 of 12 serum samples obtained within 2 days of admission. Although acute-phase serum from the patients reported here was almost always collected at the time of admission and those who had symptoms >7 days before admission were excluded from enrollment, for some, a rapid, anamnestic response could have developed before admission. Many patients had diabetes and lower extremity infection or chronic lower extremity disease that could have led to prolonged antigenic stimulation resulting in a high level of CPS-specific IgG that declined during convalescence.

Our study has some limitations. Because we enrolled patients from only 1 city, the diversity of surface antigens relevant to immune response might not be applicable to other regions. Despite obtaining acute-phase serum at admission, the time of bacteremia onset could not be determined, complicating interpretation of immune response results. Our study was not designed to evaluate functional aspects of immune responses, which will be relevant to vaccine design considerations.

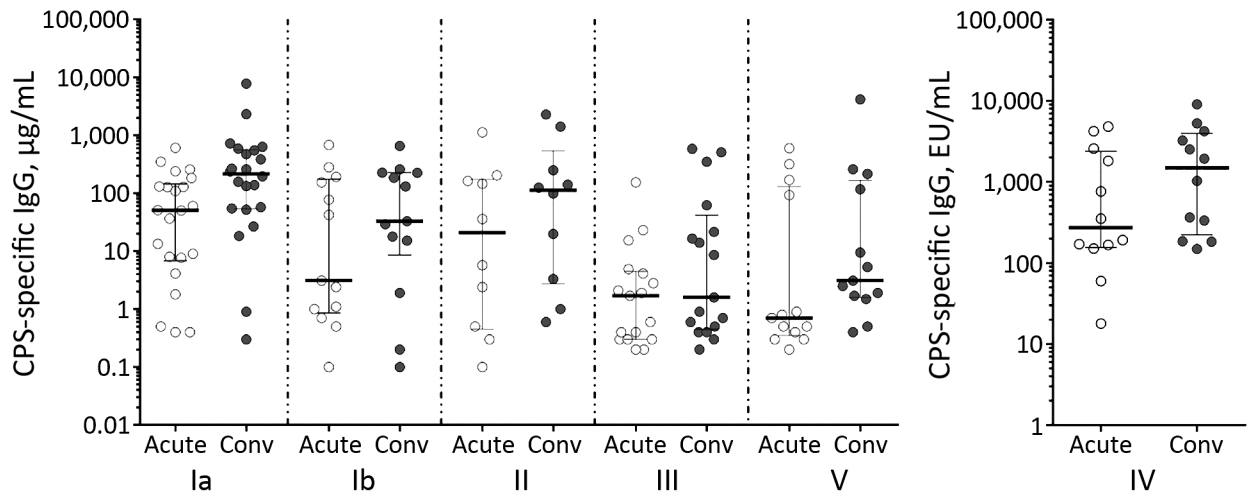


Figure 2. CPS-specific IgG concentrations/titers in acute- versus convalescent-phase serum from patients with group B streptococcal infection, Houston, Texas, USA. Horizontal bars represent median concentrations (\pm interquartile range) for each patient group. Conv, convalescent; CPS, capsular polysaccharide; EU, ELISA units.

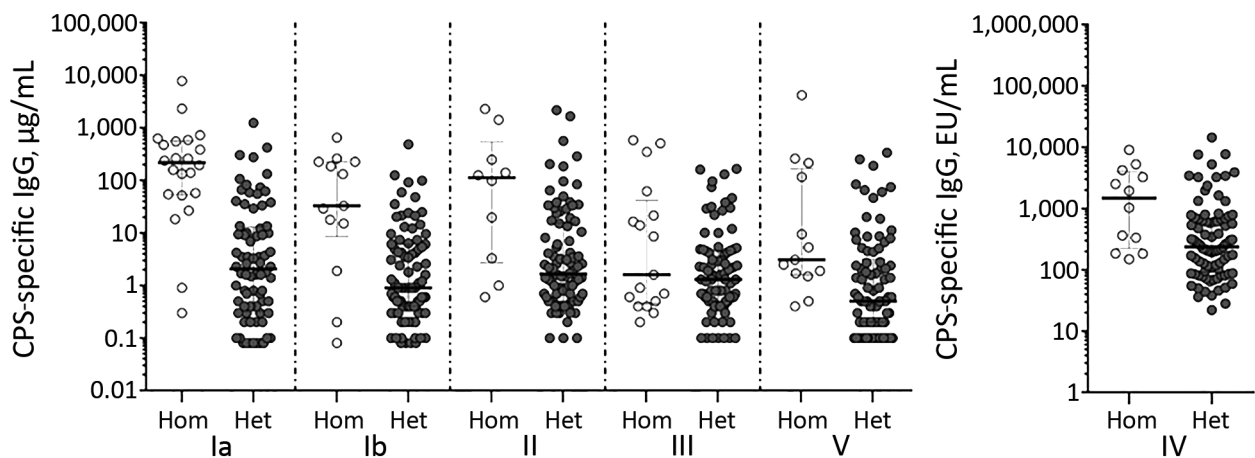


Figure 3. Concentrations of CPS-specific IgG against homologous or heterologous group B streptococcal serotypes in convalescent-phase serum samples from infected patients, Houston, Texas, USA. Horizontal bars indicate median concentrations (\pm interquartile range) within each group. CPS, capsular polysaccharide; EU, ELISA units; het, heterologous; hom, homologous.

One requirement for a robust protective response is surface availability of antigens for antibody recognition (7). In murine models of GBS disease, pilus components induce protective immunity against all tested GBS challenge strains (8), and sufficiently high CPS-specific antibodies are associated with disease protection for newborn infants (30,32). The concept that CPS-protein conjugate vaccines are immunogenic in older adults also is well established (33). A 13-valent polysaccharide conjugate vaccine has proven effective at preventing vaccine-type invasive disease caused by *Streptococcus pneumoniae*, another

pathogen that results in serious illness in adults with underlying medical conditions and those ≥ 65 years of age (34). Theoretically, a GBS conjugate CPS vaccine also incorporating pilus protein surface antigens could elicit a protective immune response providing protection for those adults at risk for invasive infection.

Acknowledgments

We thank the patients who made the study possible and acknowledge Robin D. Schroeder for helping with manuscript preparation.

M.S.E. receives research funds from Pfizer, Inc. C.J.B. is a consultant to Pfizer, Inc., and CureVac and serves on an advisory board for Seqirus, Inc. C.D.R., M.F., G.T., G.B., E.B., S.B., and I.M. are employees of GSK Vaccines. This work was supported by Novartis Vaccines.

Dr. Edwards is a pediatric infectious disease physician at Baylor College of Medicine and Texas Children's Hospital. Her research interests include GBS infections and Chagas disease.

References

- Skoff TH, Farley MM, Petit S, Craig AS, Schaffner W, Gershman K, et al. Increasing burden of invasive group B streptococcal disease in nonpregnant adults, 1990–2007. *Clin Infect Dis*. 2009;49:85–92. <http://dx.doi.org/10.1086/599369>
- Phares CR, Lynfield R, Farley MM, Mohle-Boetani J, Harrison LH, Petit S, et al. Epidemiology of invasive group B streptococcal disease in the United States, 1999–2005. *JAMA*. 2008;299:2056–65. <http://dx.doi.org/10.1001/jama.299.17.2056>
- Centers for Disease Control and Prevention. Active Bacterial Core surveillance report, Emerging Infections Program Network, Group B *Streptococcus*, 2014 [cited 2016 Aug 4]. <http://www.cdc.gov/abcs/reports-findings/survreports/gbs14.pdf>
- Blumberg HM, Stephens DS, Modansky M, Erwin M, Elliot J, Facklam RR, et al. Invasive group B streptococcal disease: the

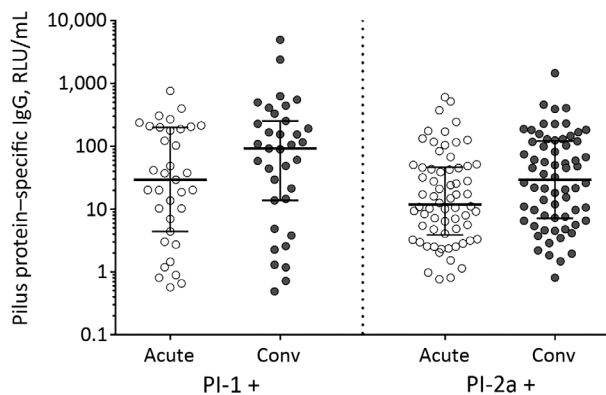


Figure 4. Pilus-specific antibody responses in acute- and convalescent-phase serum from patients infected with group B streptococcal strains expressing pilus type 1 or type 2a, Houston, Texas, USA. Anti-pilus-specific IgG titers were measured by multiplex immunoassay that used recombinant pilus proteins coupled to magnetic beads and expressed in RLU/mL. Horizontal bars represent the median (\pm interquartile range) within each population. For both comparisons, anti-pilus IgG increased significantly in serum collected during the acute and convalescent phases ($p < 0.001$). p values were calculated by t -test on log-transformed data. Conv, convalescent; RLU, relative Luminex units.

- emergence of serotype V. *J Infect Dis.* 1996;173:365–73. <http://dx.doi.org/10.1093/infdis/173.2.365>
5. Elliott JA, Farmer KD, Facklam RR. Sudden increase in isolation of group B streptococci, serotype V, is not due to emergence of a new pulsed-field gel electrophoresis type. *J Clin Microbiol.* 1998;36:2115–6.
 6. Lauer P, Rinaudo CD, Soriani M, Margarit I, Maione D, Rosini R, et al. Genome analysis reveals pili in group B *Streptococcus*. *Science.* 2005;309:105. <http://dx.doi.org/10.1126/science.1111563>
 7. Maione D, Margarit I, Rinaudo CD, Masignani V, Mora M, Scarselli M, et al. Identification of a universal group B *Streptococcus* vaccine by multiple genome screen. *Science.* 2005;309:148–50. <http://dx.doi.org/10.1126/science.1109869>
 8. Margarit I, Rinaudo CD, Galeotti CL, Maione D, Ghezzi C, Buttazzoni E, et al. Preventing bacterial infections with pilus-based vaccines: the group B *Streptococcus* paradigm. *J Infect Dis.* 2009;199:108–15. <http://dx.doi.org/10.1086/595564>
 9. Edwards MS, Baker CJ. Group B streptococcal infections in elderly adults. *Clin Infect Dis.* 2005;41:839–47. <http://dx.doi.org/10.1086/432804>
 10. Lancefield RC. A serologic differentiation of specific types of bovine hemolytic streptococci (group B). *J Exp Med.* 1934;59:441–58. <http://dx.doi.org/10.1084/jem.1934.441>
 11. Poyart C, Tazi A, Réglier-Poupet H, Billoët A, Tavares N, Raymond J, et al. Multiplex PCR assay for rapid and accurate capsular typing of group B streptococci. *J Clin Microbiol.* 2007;45:1985–8. <http://dx.doi.org/10.1128/JCM.00159-07>
 12. Rosini R, Campisi E, De Chiara M, Tettelin H, Rinaudo D, Toniolo C, et al. Genomic analysis reveals the molecular basis for capsule loss in the group B *Streptococcus* population. *PLoS One.* 2015;10:e0125985. <http://dx.doi.org/10.1371/journal.pone.0125985>
 13. Rosini R, Rinaudo CD, Soriani M, Lauer P, Mora M, Maione D, et al. Identification of novel genomic islands coding for antigenic pilus-like structures in *Streptococcus agalactiae*. *Mol Microbiol.* 2006;61:126–41. <http://dx.doi.org/10.1111/j.1365-2958.2006.05225.x>
 14. Yao K, Poulsen K, Maione D, Rinaudo CD, Baldassarri L, Telford JL, et al. Capsular gene typing of *Streptococcus agalactiae* compared to serotyping by latex agglutination. *J Clin Microbiol.* 2013;51:503–7. <http://dx.doi.org/10.1128/JCM.02417-12>
 15. Guttormsen H-K, Baker CJ, Edwards MS, Paoletti LC, Kasper DL. Quantitative determination of antibodies to type III group B streptococcal polysaccharide. *J Infect Dis.* 1996;173:142–50. <http://dx.doi.org/10.1093/infdis/173.1.142>
 16. Poretz DM. Commentary on “Group B streptococcal bacteremia in adults in the 21st century. Review of 132 episodes over a 10-year period in a large community teaching hospital.” *Infectious Diseases in Clinical Practice.* 2013;21:77–8. <http://dx.doi.org/10.1097/IPC.0b013e318286b5a6>
 17. Kaseman JA, Myers NM, Miracle JE, Myers JP. Group B streptococcal bacteremia in adults in the 21st century. Review of 132 episodes over a 10-year period in a large community teaching hospital. *Infectious Diseases in Clinical Practice.* 2013;21:105–10. <http://dx.doi.org/10.1097/IPC.0b013e318279ee4f>
 18. Tazi A, Morand PC, Réglier-Poupet H, Dmytruk N, Billoët A, Antona D, et al. Invasive group B streptococcal infections in adults, France (2007–2010). *Clin Microbiol Infect.* 2011;17:1587–9. <http://dx.doi.org/10.1111/j.1469-0691.2011.03628.x>
 19. Kothari NJ, Morin CA, Glennen A, Jackson D, Harper J, Schrag SJ, et al. Invasive group B streptococcal disease in the elderly, Minnesota, USA, 2003–2007. *Emerg Infect Dis.* 2009;15:1279–81. <http://dx.doi.org/10.3201/eid1508.081381>
 20. Teatero S, Athey TBT, Van Caesele P, Horsman G, Alexander DC, Melano RG, et al. Emergence of serotype IV group B *Streptococcus* adult invasive disease in Manitoba and Saskatchewan, Canada, is driven by clonal sequence type 459 strains. *J Clin Microbiol.* 2015;53:2919–26. <http://dx.doi.org/10.1128/JCM.01128-15>
 21. Honsa E, Fricke T, Stephens AJ, Ko D, Kong F, Gilbert GL, et al. Assignment of *Streptococcus agalactiae* isolates to clonal complexes using a small set of single nucleotide polymorphisms. *BMC Microbiol.* 2008;8:140. <http://dx.doi.org/10.1186/1471-2180-8-140>
 22. Luan S-L, Granlund M, Sellin M, Lagergård T, Spratt BG, Norgren M. Multilocus sequence typing of Swedish invasive group B *streptococcus* isolates indicates a neonatally associated genetic lineage and capsule switching. *J Clin Microbiol.* 2005;43:3727–33. <http://dx.doi.org/10.1128/JCM.43.8.3727-3733.2005>
 23. Fluegge K, Wons J, Spellerberg B, Swoboda S, Siedler A, Hufnagel M, et al. Genetic differences between invasive and noninvasive neonatal group B streptococcal isolates. *Pediatr Infect Dis J.* 2011;30:1027–31. <http://dx.doi.org/10.1097/INF.0b013e31822a2a1f>
 24. Sørensen UB, Poulsen K, Ghezzi C, Margarit I, Kilian M. Emergence and global dissemination of host-specific *Streptococcus agalactiae* clones. *MBio.* 2010;1:e00178-10. <http://dx.doi.org/10.1128/mBio.00178-10>
 25. Ferrieri P, Lynfield R, Creti R, Flores AE. Serotype IV and invasive group B *Streptococcus* disease in neonates, Minnesota, USA, 2000–2010. *Emerg Infect Dis.* 2013;19:551–8. <http://dx.doi.org/10.3201/eid1904.121572>
 26. Bellais S, Six A, Fouet A, Longo M, Dmytruk N, Glaser P, et al. Capsular switching in group B *Streptococcus* CC17 hypervirulent clone: a future challenge for polysaccharide vaccine development. *J Infect Dis.* 2012;206:1745–52. <http://dx.doi.org/10.1093/infdis/jis605>
 27. Florindo C, Damião V, Silvestre I, Farinha C, Rodrigues F, Nogueira F, et al. Epidemiological surveillance of colonising group B *Streptococcus* epidemiology in the Lisbon and Tagus Valley regions, Portugal (2005 to 2012): emergence of a new epidemic type IV/clonal complex 17 clone. *Euro Surveill.* 2014;19:20825. <http://dx.doi.org/10.2807/1560-7917.ES2014.19.23.20825>
 28. Edwards MV, Nizet V, Baker CJ. Group B streptococcal infections. In: Wilson CB, Nizet V, Maldonado YA, Remington JS, Klein JO, editors. *Remington and Klein's infectious diseases of the fetus and newborn infant.* 8th ed. Philadelphia: Elsevier Saunders; 2016. p. 411–56.
 29. Baker CJ, Edwards MS. Group B streptococcal conjugate vaccines. *Arch Dis Child.* 2003;88:375–8. <http://dx.doi.org/10.1136/adc.88.5.375>
 30. Baker CJ, Carey VJ, Rench MA, Edwards MS, Hillier SL, Kasper DL, et al. Maternal antibody at delivery protects neonates from early onset group B streptococcal disease. *J Infect Dis.* 2014;209:781–8. <http://dx.doi.org/10.1093/infdis/jit549>
 31. Wessels MR, Kasper DL, Johnson KD, Harrison LH. Antibody responses in invasive group B streptococcal infection in adults. *J Infect Dis.* 1998;178:569–72. <http://dx.doi.org/10.1086/517476>
 32. Dangor Z, Kwatra G, Izu A, Adrian P, Cutland CL, Velaphi S, et al. Correlates of protection of serotype-specific capsular antibody and invasive group B *Streptococcus* disease in South African infants. *Vaccine.* 2015;33:6793–9. <http://dx.doi.org/10.1016/j.vaccine.2015.10.019>
 33. Palazzi DL, Rench MA, Edwards MS, Baker CJ. Use of type V group B streptococcal conjugate vaccine in adults 65–85 years old. *J Infect Dis.* 2004;190:558–64. <http://dx.doi.org/10.1086/422010>
 34. Bonten MJM, Huijts SM, Bolkenbaas M, Webber C, Patterson S, Gault S, et al. Polysaccharide conjugate vaccine against pneumococcal pneumonia in adults. *N Engl J Med.* 2015;372:1114–25. <http://dx.doi.org/10.1056/NEJMoa1408544>

Address for correspondence: Morven S. Edwards, Baylor College of Medicine, Pediatric Infectious Diseases, Feigin Center, Ste 1120, 1102 Bates Ave, Houston, TX 77030, USA; email morvene@bcm.edu