

# Elevated *Toxoplasma gondii* Infection Rates for Retinas from Eye Banks, Southern Brazil

Alessandra G. Commodaro, Melissa Chiasson,  
Natarajan Sundar, Luiz Vicente Rizzo,  
Rubens Belfort, Jr., Michael E. Grigg

We found significantly higher incidence of *Toxoplasma gondii* DNA in eye bank specimens from Joinville in southern Brazil (13/15, 87%) than in São Paulo (3/42, 7%;  $p = 2.1 \times 10E-8$ ). PCR DNA sequence analysis was more sensitive at locus *NTS2* than at locus *B1*; a high frequency of mixed co-infections was detected.

*Toxoplasma gondii* is a protozoan parasite that infects nearly one third of the world's human population. Infection is typically asymptomatic, but life-threatening disease may develop in immunocompromised patients and when the infection is acquired congenitally (1). When parasites migrate to the eye, ocular toxoplasmosis (OT) can occur; this potentially blinding disease causes a high incidence of uveitis worldwide (1). In the United States,  $\approx 2\%$  of *Toxoplasma* infections progress to OT, whereas in southern Brazil, the proportion can be  $>18\%$  (1). Factors leading to development of OT are poorly understood. In most OT studies, the study population is symptomatic persons. Little is known about OT infection status among a random population. We investigated the incidence of OT in a random population in Brazil and determined the sensitivity of 3 PCR diagnostic markers used for detecting parasite DNA and genotype.

## The Study

In southern Brazil, incidence of OT ranges from 9.8% to 22% (2–4). In 1985, as part of a study to determine prevalence of toxoplasmic retinochoroidal lesions among a random population, 270 archived eyes submitted to the São Paulo Eye Bank consecutively were examined for macroscopic chorioretinal lesions or histologic evidence of retinochoroiditis (R. Belfort, Jr., unpub. data). Each was from a different person (no bilateral specimens were received). Eighteen (6.7%) eyes had chorioretinitis and 9 (3.3%)

possessed cicatricial lesions; total prevalence was 10% (27/270). Of these 27 eyes, 8 (3.0%) had mononuclear cells, and 1 (0.4%) had acute, inflammatory infiltrate consistent with OT (Figure 1). These eyes were no longer available for molecular testing.

To determine updated infection prevalence rates, we obtained 114 eyes collected during 2009 from eye banks in 2 disease-endemic regions of Brazil with different OT incidence rates, the south (Joinville,  $n = 15$ ) and southeast (São Paulo,  $n = 42$ ) (Figure 2). The eyes were collected consecutively from deceased persons who donated to eye banks, 15 in Joinville and 42 in São Paulo. All eyes were from patients who died of natural causes or in an accident and who had no history or symptoms of ophthalmologic disease. The average age of donors was 54 years (range 20–76 years); exclusion criteria included a history of lymphoma, leukemia, leptospirosis, hepatitis B or C, HIV, rabies, or bacteria associated with endocarditis. Matched serum samples for each eye were not available.

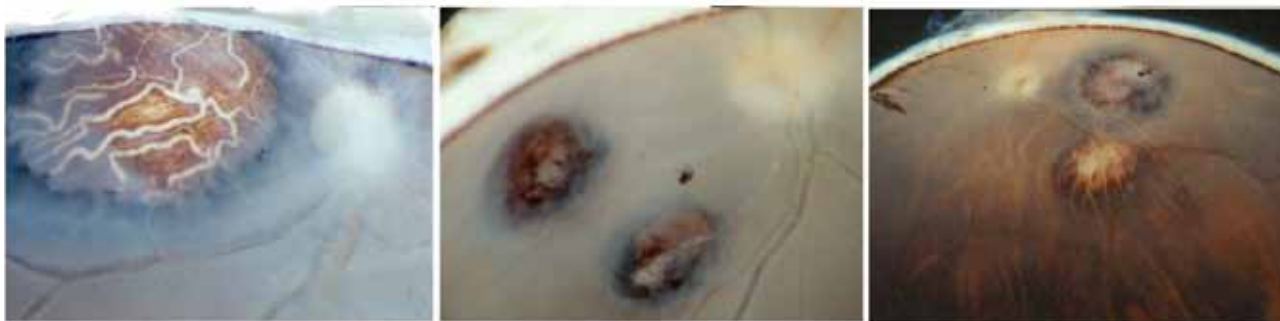
We extracted DNA from eyes to ascertain *T. gondii* prevalence and *Toxoplasma* genotype. Eyes were not examined macroscopically. Retinal DNA was extracted by using a QIAamp DNA Blood Midi Kit (QIAGEN, Valencia, CA, USA). Multilocus PCR DNA sequencing was performed by using *B1*, *NTS2*, and *GRA7* loci, as described (5,6). Positive (type I RH DNA) and negative (water only) controls were run alongside each PCR. PCR products were treated with ExoSAP-IT (USB Corp., Cleveland, OH, USA) before DNA sequencing (RML Genomics, Hamilton, MT, USA).

Specimens from 3 (7.1%) of 42 donors from São Paulo tested positive at *NTS2* (online Technical Appendix Table, <http://wwwnc.cdc.gov/EID/article/22/4/15-1192-Techapp1.pdf>), similar to the incidence rate determined among the eyes examined macroscopically in 1985 and consistent with previously published work (7). Our results show that no significant change in relative frequency of *Toxoplasma* infection occurred in eyes donated in São Paulo over a 25-year period. DNA sequence analysis of the 3 positive samples identified an archetypal allele shared by types II and III strains at *NTS2*. Only 1 *NTS2*-positive eye (no. 37) was positive at *B1* (sensitivity 33% relative to *NTS2*; *B1* is a standard diagnostic marker [5]). It possessed a unique allele (online Technical Appendix Table). No samples were PCR positive at the *GRA7* marker.

Of the 15 donors from Joinville, 13 (87%) tested positive for *Toxoplasma* DNA at *NTS2*. Six samples possessed

Author affiliations: National Institutes of Health, Bethesda, Maryland, USA (A.G. Commodaro, M. Chiasson, N. Sundar, M.E. Grigg); Federal University of São Paulo, São Paulo, Brazil (A.G. Commodaro, R. Belfort); Hospital Albert Einstein, São Paulo (L.V. Rizzo)

DOI: <http://dx.doi.org/10.3201/eid2204.141819>



**Figure 1.** Representative retinochoroidal lesions depicted for 3 of 18 archived eyes examined by optical microscopy for evidence of *Toxoplasma gondii* infection; 270 single eyes were examined, each from a different donor, obtained during 1985 and 2009 in São Paulo, São Paulo State, Brazil. Original magnification (left to right):  $\times 20$ ,  $\times 20$ ,  $\times 12$ .

type I alleles, 1 had a unique allele sharing phylogenetic ancestry with type I, 2 had drifted type II or type III alleles, and 4 possessed a mixture of 2 allelic types, indicative of mixed strain co-infection. The detection of 5, 3, and 3 distinct and mostly novel alleles at NTS2, B1, and GRA7, respectively, argue against the possibility that the PCR results were due to a false-negative amplification. A high incidence of mixed infection has been observed previously in Australian marsupials (8), but it is considered rare in human infection (9). In contrast, only 6 samples were positive at B1 (sensitivity 46% relative to NTS2); 1 sample had a type I allele, 4 had a unique allele, and 1 (no. 5) had a mixture of 2 different alleles. Three samples were positive at GRA7 (sensitivity 23% relative to NTS2); a type I allele, and 2 alleles sharing phylogenetic ancestry with type I and type III, respectively (online Technical Appendix Table).



**Figure 2.** Cities where retinochoroidal scars consistent with *Toxoplasma gondii* infection were found on eyes donated to eye banks in Brazil during 1985 and 2009: São Paulo, São Paulo (SP) State, and its relative position in southern Brazil to Joinville, Santa Catarina (SC) State; 522 km separates the 2 cities.

Southern Brazil experiences different incidence rates and severity of OT, although overall toxoplasmosis prevalence rates are similar. Studies in metropolitan São Paulo identified *Toxoplasma* antibodies in samples from pregnant patients that ranged from 59% to 65% across 2 decades, but no data on frequency of OT was reported (10,11). One 2004 study showed that  $\approx 10\%$  of the metropolitan São Paulo population has OT (7). Seroprevalence in São Jose do Rio Preto, another city in São Paulo State, is 74.5%, and the incidence of OT in 2009–2010 was 20.3% (2). Seropositivity in Erechim, a southern city in Rio Grande do Sul, is  $\approx 88\%$ ; OT occurs frequently (18%) and is severe (12).

## Conclusions

Our results reveal differences in the ability of parasites to infect eyes collected from the general population in different geographic regions of Brazil. The difference in eye infection prevalence rates suggests that, although most of the São Paulo population is seropositive, only 7% of the population harbor *Toxoplasma* parasites capable of migrating to the eye. However, 87% of eyes from Joinville tested positive for parasite DNA (a 1:1 correlation with seroprevalence), which may indicate that no apparent barrier to parasite entry into the eye exists in this geographic region. Although not all patients bearing parasite infections in their eyes develop OT, similar to the finding that only 30%–50% of AIDS patients experience recrudescent disease (13), our results may explain the increased incidence of OT in southern Brazil and help clarify possible factors controlling the disease.

Our findings also show that the 110 gene-copy NTS2 marker proved more sensitive than B1, a marker traditionally used to detect infection (5). In addition, NTS2 polymorphisms enabled mixed strain co-infections to be detected in the eyes of donor no. 5. Multilocus typing established that atypical strains common to Brazil caused most eye infections and identified different *Toxoplasma* genotypes circulating between the 2 locations; e.g., strains bearing alleles that share phylogenetic ancestry with type I

were only identified in Joinville. Previous studies suggested a link between parasite genotype and development of OT (14). Our work using serologic typing has established that the parasite genotype is associated with more serious congenital and ocular disease among patients in the United States and Europe (6,15). Ultimately, to determine whether increased eye infection rates in Joinville is dependent on parasite genotype, or an associated host genetic risk factor, prospective sampling should be done on eyes donated to eye banks. The serostatus of the donor, whether retinal scars are present, and the geographic origin of the donor can be recorded to determine factors associated with parasite infection and whether such donated eyes should be precluded from transplantation.

**Acknowledgments**

We thank Consuelo Adan of the São Paulo Eye Bank and Mario da Nobrega of the Joinville Eye Bank.

This work was supported in part by the National Institute of Allergy and Infectious Diseases, National Institutes of Health (to M.E.G.), Conselho Nacional de Desenvolvimento Científico e Tecnológico (grant no. 237252/2012), Fundação de Amparo a Pesquisa do Estado de São Paulo, and Coordenação de Aperfeiçoamento de Pessoal de Nível Superior. R.B.J. and L.V.R. are researchers at Conselho Nacional de Desenvolvimento Científico e Tecnológico Brazil. M.E.G. is a scholar at the Canadian Institute for Advanced Research Integrated Microbial Biodiversity Program.

Dr. Commodaro is a postdoctoral fellow in the Department of Ophthalmology at the Federal University of São Paulo. Her research interests are the investigation and development of new methods of diagnosis of infectious diseases with ocular involvement.

**References**

1. Holland GN. Ocular toxoplasmosis: a global reassessment. Part I: epidemiology and course of disease. *Am J Ophthalmol.* 2003;136:973–88. <http://dx.doi.org/10.1016/j.ajo.2003.09.040>
2. Ferreira AI, De Mattos CC, Frederico FB, Meira CS, Almeida GC Jr, Nakashima F, et al. Risk factors for ocular toxoplasmosis in Brazil. *Epidemiol Infect.* 2014;142:142–8.
3. Glasner PD, Silveira C, Kruszon-Moran D, Martins MC, Burnier Junior M, Silveira S, et al. An unusually high prevalence of ocular toxoplasmosis in southern Brazil. *Am J Ophthalmol.* 1992;114:136–44. [http://dx.doi.org/10.1016/S0002-9394\(14\)73976-5](http://dx.doi.org/10.1016/S0002-9394(14)73976-5)

4. Gouveia EB, Yamamoto JH, Abdalla M, Hirata CE, Kubo P, Olivales E. Causes of uveitis in a tertiary center in São Paulo city, Brazil. *Arq Bras Oftalmol.* 2004;67:139–45. <http://dx.doi.org/10.1590/S0004-27492004000100025>
5. Grigg ME, Boothroyd JC. Rapid identification of virulent type I strains of the protozoan pathogen *Toxoplasma gondii* by PCR-restriction fragment length polymorphism analysis at the B1 gene. *J Clin Microbiol.* 2001;39:398–400. <http://dx.doi.org/10.1128/JCM.39.1.398-400.2001>
6. Shobab L, Pleyer U, Johnsen J, Metzner S, James ER, Torun N, et al. *Toxoplasma* serotype is associated with development of ocular toxoplasmosis. *J Infect Dis.* 2013;208:1520–8. <http://dx.doi.org/10.1093/infdis/jit313>
7. Vallochi AL, Muccioli C, Martins MC, Silveira C, Belfort R Jr, Rizzo LV. The genotype of *Toxoplasma gondii* strains causing ocular toxoplasmosis in humans in Brazil. *Am J Ophthalmol.* 2005;139:350–1. <http://dx.doi.org/10.1016/j.ajo.2004.07.040>
8. Pan S, Thompson RC, Grigg ME, Sundar N, Smith A, Lymbery AJ. Western Australian marsupials are multiply infected with genetically diverse strains of *Toxoplasma gondii*. *PLoS ONE.* 2012;7:e45147. <http://dx.doi.org/10.1371/journal.pone.0045147>
9. Aspinall TV, Guy EC, Roberts KE, Joynson DH, Hyde JE, Sims PF. Molecular evidence for multiple *Toxoplasma gondii* infections in individual patients in England and Wales: public health implications. *Int J Parasitol.* 2003;33:97–103. [http://dx.doi.org/10.1016/S0020-7519\(02\)00230-8](http://dx.doi.org/10.1016/S0020-7519(02)00230-8)
10. Fernandes GC, Azevedo RS, Amaku M, Yu AL, Massad E. Seroepidemiology of *Toxoplasma* infection in a metropolitan region of Brazil. *Epidemiol Infect.* 2009;137:1809–15. <http://dx.doi.org/10.1017/S0950268809002799>
11. Guimarães AC, Kawarabayashi M, Borges MM, Tolezano JE, Andrade Junior HF. Regional variation in toxoplasmosis seronegativity in the São Paulo metropolitan region. *Rev Inst Med Trop São Paulo.* 1993;35:479–83. <http://dx.doi.org/10.1590/S0036-46651993000600001>
12. Silveira C, Belfort R Jr, Muccioli C, Abreu MT, Martins MC, Victora C, et al. A follow-up study of *Toxoplasma gondii* infection in southern Brazil. *Am J Ophthalmol.* 2001;131:351–4. [http://dx.doi.org/10.1016/S0002-9394\(00\)00830-8](http://dx.doi.org/10.1016/S0002-9394(00)00830-8)
13. Luft BJ, Hafner R, Korzun AH, Lepout C, Antoniskis D, Bosler EM, et al. Toxoplasmic encephalitis in patients with the acquired immunodeficiency syndrome. Members of the ACTG 077p/ANRS 009 Study Team. *N Engl J Med.* 1993;329:995–1000. <http://dx.doi.org/10.1056/NEJM199309303291403>
14. Grigg ME, Ganatra J, Boothroyd JC, Margolis TP. Unusual abundance of atypical strains associated with human ocular toxoplasmosis. *J Infect Dis.* 2001;184:633–9. <http://dx.doi.org/10.1086/322800>
15. McLeod R, Boyer KM, Lee MA, Mui E, Wroblewski K, Karrison T, et al. Prematurity and severity associate with *T. gondii* alleles (NCCCTS, 1981–2009). *Clin Infect Dis.* 2012;54:1595–605. <http://dx.doi.org/10.1093/cid/cis258>

Addresses for correspondence: Michael E. Grigg, Laboratory of Parasitic Diseases, NIAID, 4 Center Dr, Rm B1-06, Bethesda, MD 20892-0425, USA; email: griggm@niaid.nih.gov

# Elevated *Toxoplasma gondii* Infection Rates for Retinas from Eye Banks, Southern Brazil

## Technical Appendix

**Technical Appendix Table.** Polymorphisms in the NTS2, B1, and GRA7 genes by direct PCR on *Toxoplasma gondii*-infected eyes identified in eye banks from Joinville and Sao Paulo City, Brazil

	NTS2							B1					GRA7														Allele						
	723	761	765	843	856	912	1009	Allele	225	366	378	504	Allele	396	402	446	502	505	523	533	540	550	568	577	605	619		625	629	683	690		
Joinville																																	
Consensus	T	G	T	A	G	T	A		C	t/c	G	g/c		A	T	A	A	C	C	C	C	A	A	T	C	A	C	C	T	A			
Type I	C	T	A	G	A	.	.	I	.	T	.	G	I	G	.	.	C	G	G	G	.	.	G	.	.	.	.	.	.	.	I		
Type II	.	.	.	.	.	.	.	II	.	.	.	.	II	.	.	.	.	.	.	.	A	.	.	.	.	.	.	.	.	II			
Type III	.	.	.	.	.	.	.	III	.	.	.	.	III	.	.	.	.	.	.	.	.	T	.	A	T	C	A	A	C	C	II		
1-LE	C	T	A	G	A	.	.	I																									
2-RE	C	T	A	G	A	.	.	I																									
3-RE	C	T	A	G	A	.	g/a	u1																									
4-RE	t/c	g/t	a/t	g/a	g/a	.	.	mixed	.	T	.	C	u1	G	A	.	C	G	G	G	.	.	G	.	.	.	.	.	.	u1			
5-LE	t/c	g/t	a/t	g/a	g/a	.	.	mixed	.	T	.	C	u1																				
5-RE	.	.	.	.	.	.	.	II/III	T	T	a/g	G	u2																				
6-RE	C	T	A	G	A	.	.	I					x	x	G	.	.	.	.	.	.	T	.	A	T	C	A	A	C	.	u2		
7-RE	C	T	A	G	A	.	.	I																									
8-LE															G	.	.	C	G	G	G	.	.	G	.	.	.	.	.	.	.	I	
9-LE	C	T	A	G	A	.	.	I	.	T	.	G	I																				
10-LE	.	.	.	.	T	C	.	u2	.	T	.	C	u1																				
11-RE	t/c	g/t	a/t	g/a	g/a	.	.	mixed	.	T	.	C	u1																				
12-RE	.	.	.	.	T	.	.	u3																									
14-LE	C	T	A	G	A	.	.	I																									
14-RE	C	T	A	G	A	.	.	I																									
15-RE	t/c	g/t	a/t	g/a	g/a	.	.	mixed																									
São Paulo																																	
34	.	.	.	.	.	.	.	II/III																									
37	.	.	.	.	.	.	.	II/III	.	T	.	C	u1																				
49	.	.	.	.	.	.	.	II/III																									

Reference

AF158092-RH

AF179871-RH

DQ459443-RH