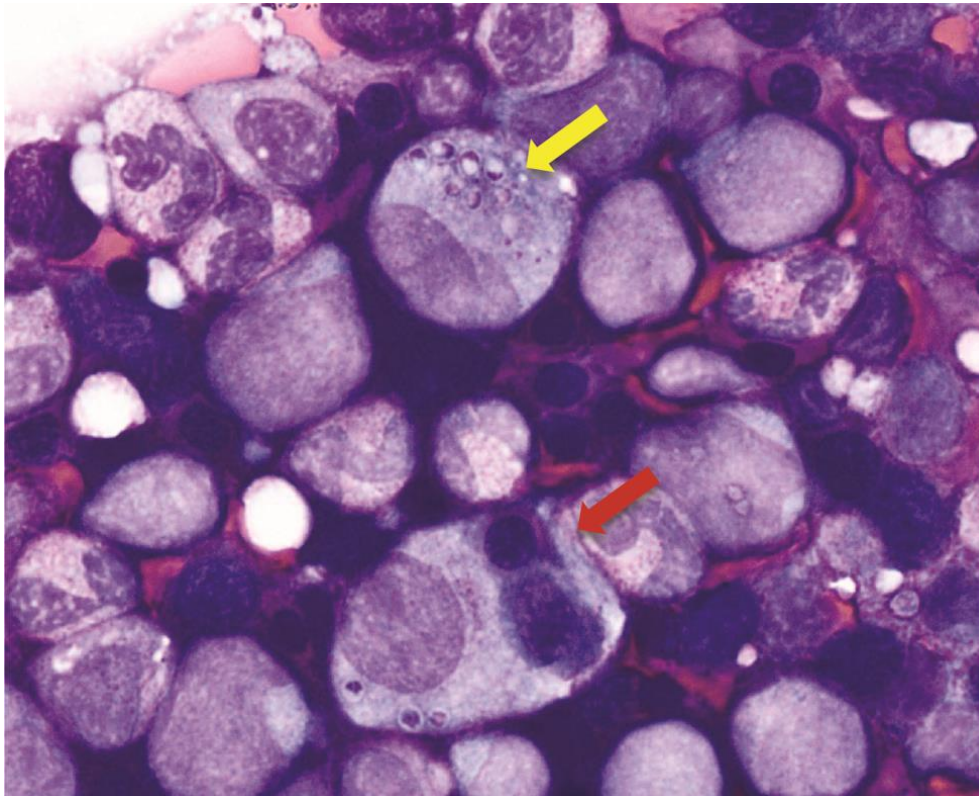


# Hemophagocytic Lymphohistiocytosis and Progressive Disseminated Histoplasmosis

## Technical Appendix



**Technical Appendix Figure.** Wright-Giemsa stain of the bone marrow biopsy specimen of a 6-month-old girl with hemophagocytic lymphohistiocytosis and progressive disseminated histoplasmosis. Imprints show cytoplasm-rich (activated) macrophages with hemophagocytosis (black arrow) and intracellular organisms (white arrow). Original magnification  $\times 100$ . A color version of this figure is available online (<http://wwwnc.cdc.gov/EID/article/22/6/15-1682-F1.htm>).