

- in Ontario, Canada: management implications. *J Wildl Dis.* 2006;42:589–605. <http://dx.doi.org/10.7589/0090-3558-42.3.589>
27. Rosatte R, Sobey K, Donovan D, Allan M, Bruce L, Buchanan T, et al. Raccoon density and movements after population reduction to control rabies. *J Wildl Manage.* 2007; 71:2373–8. <http://dx.doi.org/10.2193/2006-549>
28. Rosatte R, Donovan D, Allan M, Howes LA, Silver A, Bennett K, et al. Emergency response to raccoon rabies introduction into Ontario. *J Wildl Dis.* 2001;37:265–79. <http://dx.doi.org/10.7589/0090-3558-37.2.265>
29. Nettles VF, Shaddock JH, Sikes RK, Reyes CR. Rabies in translocated raccoons. *Am J Public Health.* 1979;69:601–2. <http://dx.doi.org/10.2105/AJPH.69.6.601>

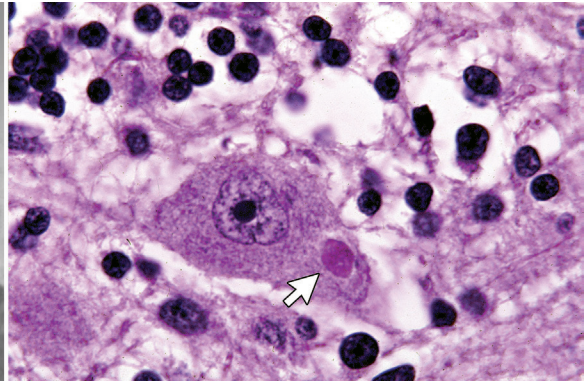
Address for correspondence: Roman Biek, Boyd Orr Centre for Population and Ecosystem Health, Institute for Biodiversity, Animal Health and Comparative Medicine, Rm 401, Graham Kerr Bldg, University of Glasgow, Glasgow, Scotland G12 8QQ, UK; email: [roman.biek@glasgow.ac.uk](mailto:roman.biek@glasgow.ac.uk)

# etymologia

## Negri [neg'rē] Bodies

Ronnie Henry, Frederick A. Murphy

**N**egri bodies are cytoplasmic inclusions in neurons that are composed of rabies virus proteins and RNA. Adelchi Negri, an assistant pathologist working in the laboratory of Camillo Golgi, observed these inclusions in rabbits and dogs with rabies. These findings were presented in 1903 at a meeting of the Società Medico-Chirurgica of Pavia. Negri was convinced the inclusions were a parasitic protozoan and the etiologic agent of rabies. Later that same year, however, Paul Remlinger and Rifat-Bey Frasher in Constantinople and, separately, Alfonso di Vestea in Naples showed that the etiologic agent of rabies is a filterable virus. Negri continued until 1909 to try to prove that the intraneuronal neurons named after him corresponded to steps in the developmental cycle of a protozoan. In spite of his incorrect etiologic hypothesis, Negri's discovery represented a breakthrough in the rapid diagnosis of rabies, and the detection of Negri bodies was used for many years until the development of modern diagnostic methods.



Left, Adelchi Negri 1876–1912, right: Neuron showing a cytoplasmic inclusion body (Negri body, arrow). Courtesy Frederick A. Murphy.

### Sources

- Centers for Disease Control and Prevention. Histologic examination. Apr 22, 2011 [cited 2017 Jun 21]. <https://www.cdc.gov/rabies/diagnosis/histologic.html>
- Di Vestea A. On the finding of the filtration of the virus of anger [in Italian]. *Annali di Igiene Sperimentale.* 1905;15:147.
- Jackson AC. Rabies and other rhabdovirus infections. In: Longo DL, Fauci AS, Kasper DL, Hauser SL, Jameson JL, Loscalzo J, editors. *Harrison's principles of internal medicine.* 18th ed. New York: McGraw Hill; 2012. p. 1611–7.
- Remlinger PA, Frasher RB. Rabies virus crosses the Berkefeld filter [in French]. *Comptes Rendus de la Société de Biologie.* 1903;55:730–1.

Address for correspondence: Ronnie Henry, Centers for Disease Control and Prevention, 1600 Clifton Rd NE, Mailstop E03, Atlanta, GA 30329-4027, USA; email: [boq3@cdc.gov](mailto:boq3@cdc.gov)

DOI: <https://doi.org/10.3201/eid2309.ET2309>