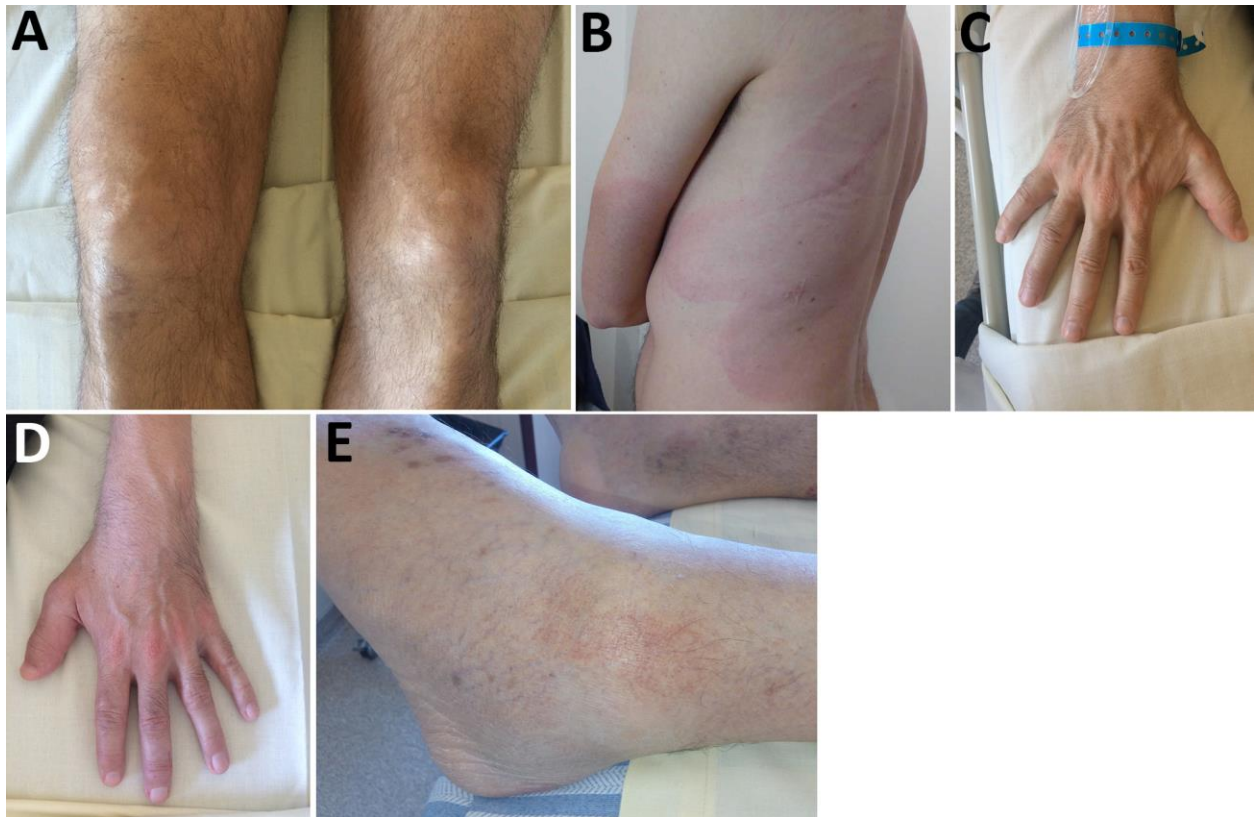


# Disseminated *Spiroplasma apis* Infection in Patient with Agammaglobulinemia, France

## Technical Appendix



**Technical Appendix Figure.** Clinical symptoms of *Spiroplasma apis* infection in a patient. A) Arthritis in knee. B) Erythema. C) Tenosynovitis in right wrist. D) Tenosynovitis in left wrist. E) Arthritis in left ankle.