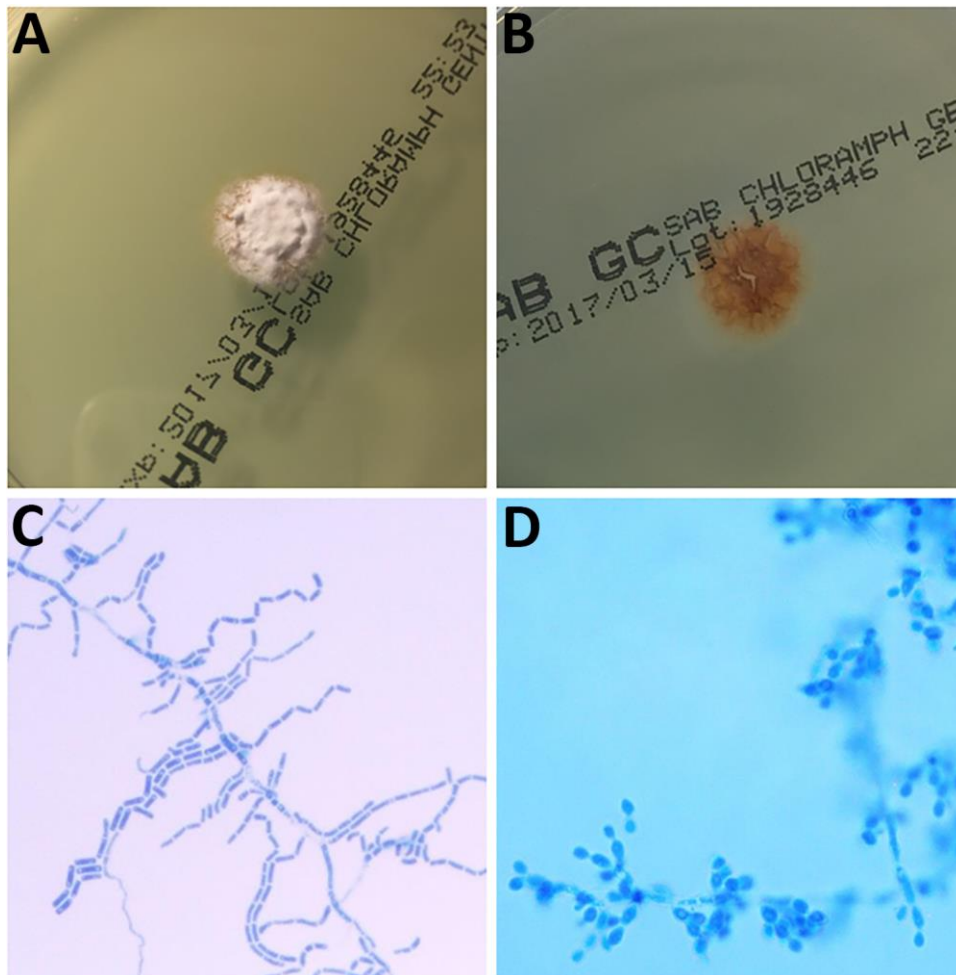


# Invasive Infections Caused by *Nannizziopsis* spp. Molds in Immunocompromised Patients

## Technical Appendix



**Technical Appendix Figure 1.** A) *Nannizziopsis obscura* forming white and thinly cottony mold colonies on Sabouraud medium incubated at 35°C, viewed from the front. B) *N. obscura* specimen viewed from the back. C) Undulate hyphae with chains of adjacent arthroconidia. D) Two-celled specimen of undulate hyphae.



**Technical Appendix Figure 2.** Molecular phylogenetic analysis of ITS region (from ITS5 to ITS4 primers hybridization region) of *Nannizziopsis vriesii* complex strains inferred by the maximum likelihood method based on the Tamura-Nei model with a discrete gamma distribution (1,000 replicates). Strains from human infections appear in bold. \*, strains from our study. †, sequences obtained from ITS4/ITS7 PCR on samples.