

Effects of Acute Illness on Contact Patterns, Malawi, 2017

Appendix 2

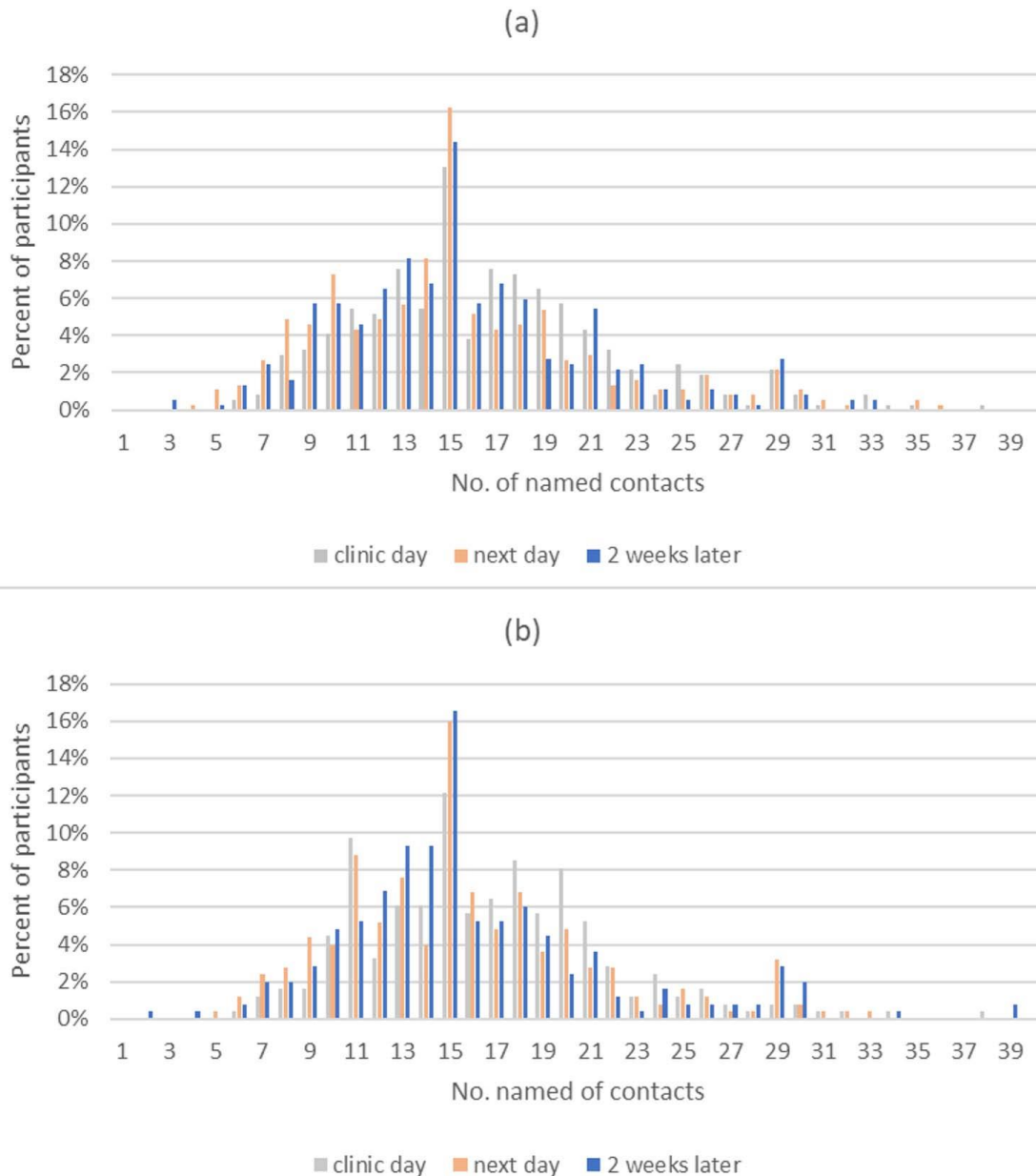


Figure 1. Frequency distribution of number of contacts in the three 24-hour periods of (a) patients and (b) caregivers.

		ALL CONTACTS												
		All				Duration >=10min				Indoor				
		All	0-5y	6-17y	18+y	All	0-5y	6-17y	18+y	All	0-5y	6-17y	18+y	
Ill	Patient	228	15.5	2.2	5.0	8.2	13.1	2.0	4.3	6.3	6.4	0.9	2.2	3.4
	0-5y	109	14.6	3.0	4.8	6.8	12.8	2.8	4.3	5.4	6.0	0.9	2.0	3.1
	6-17y	45	15.9	1.8	6.9	7.2	13.6	1.7	6.0	5.3	7.2	0.9	2.9	3.4
	18+y	74	16.4	1.3	4.2	11.0	13.2	1.1	3.4	8.4	6.5	0.9	2.0	3.6
	Caregiver	154	15.6	2.0	4.2	9.4	13.0	1.8	3.6	7.1	6.6	1.3	2.2	3.0
Well	Patient	228	15.9	2.5	5.4	8.0	13.9	2.3	4.8	6.5	7.2	1.1	2.4	3.7
	0-5y	109	15.2	3.3	5.8	6.1	13.8	3.1	5.4	5.1	6.8	1.2	2.4	3.2
	6-17y	45	16.2	2.5	7.7	6.0	14.1	2.1	6.6	5.1	7.6	1.1	2.9	3.6
	18+y	74	16.7	1.3	3.4	12.0	13.8	1.1	2.8	9.4	7.5	0.9	1.9	4.6
	Caregiver	154	15.9	1.8	4.1	9.9	13.7	1.8	3.8	7.6	6.6	1.3	2.3	3.0

		HOUSEHOLD CONTACTS												
		All				Duration >=10min				Indoor				
		All	0-5y	6-17y	18+y	All	0-5y	6-17y	18+y	All	0-5y	6-17y	18+y	
Ill	Patient	228	4.4	0.6	1.6	2.2	4.2	0.6	1.6	2.1	4.2	0.6	1.5	2.1
	0-5y	109	4.4	0.5	1.6	2.3	4.2	0.5	1.5	2.2	4.2	0.5	1.5	2.2
	6-17y	45	4.6	0.6	1.9	2.2	4.6	0.6	1.8	2.2	4.6	0.6	1.8	2.2
	18+y	74	4.2	0.7	1.5	2.0	4.0	0.7	1.4	1.9	3.9	0.7	1.5	1.8
	Caregiver	154	4.4	1.1	1.8	1.5	4.3	1.1	1.8	1.4	4.2	1.1	1.7	1.4
Well	Patient	228	4.6	0.7	1.7	2.3	4.6	0.7	1.7	2.3	4.6	0.7	1.6	2.3
	0-5y	109	4.7	0.6	1.7	2.3	4.6	0.6	1.7	2.3	4.5	0.6	1.7	2.3
	6-17y	45	5.2	0.7	1.8	2.7	5.1	0.7	1.7	2.6	5.2	0.7	1.7	2.7
	18+y	74	4.3	0.7	1.6	2.0	4.3	0.7	1.6	2.0	4.2	0.7	1.5	2.0
	Caregiver	154	4.5	1.2	1.8	1.6	4.5	1.2	1.8	1.5	4.4	1.2	1.8	1.5

		NON-HOUSEHOLD CONTACTS												
		All				Duration >=10min				Indoor				
		All	0-5y	6-17y	18+y	All	0-5y	6-17y	18+y	All	0-5y	6-17y	18+y	
Ill	Patient	228	11.1	1.6	3.4	6.1	8.9	1.5	2.8	4.2	2.2	0.3	0.6	1.3
	0-5y	109	10.3	2.6	3.2	4.5	8.6	2.4	2.7	3.1	1.8	0.4	0.5	0.9
	6-17y	45	11.2	1.2	5.1	5.0	9.0	1.1	4.2	3.2	2.6	0.3	1.1	1.2
	18+y	74	12.2	0.6	2.6	9.0	9.2	0.4	1.9	6.5	2.5	0.2	0.5	1.9
	Caregiver	154	11.2	0.8	2.4	8.0	8.7	0.7	1.9	5.6	2.3	0.2	0.5	1.6
Well	Patient	228	11.2	1.8	3.7	5.7	9.3	1.6	3.1	4.2	2.6	0.4	0.7	1.5
	0-5y	109	10.5	2.7	4.0	3.8	9.2	2.6	3.7	2.7	2.3	0.6	0.8	0.9
	6-17y	45	11.0	1.8	5.9	3.3	9.0	1.4	4.9	2.5	2.4	0.4	1.1	0.9
	18+y	74	12.4	0.5	1.8	10.0	9.5	0.4	1.2	7.5	3.2	0.1	0.4	2.7
	Caregiver	154	11.3	0.7	2.3	8.3	9.2	0.6	2.0	6.1	2.2	0.2	0.5	1.5

Figure 2. Matrices of mean number of contacts when ill (the day after the clinic visit) and when well (two weeks later) by age group and contact type.

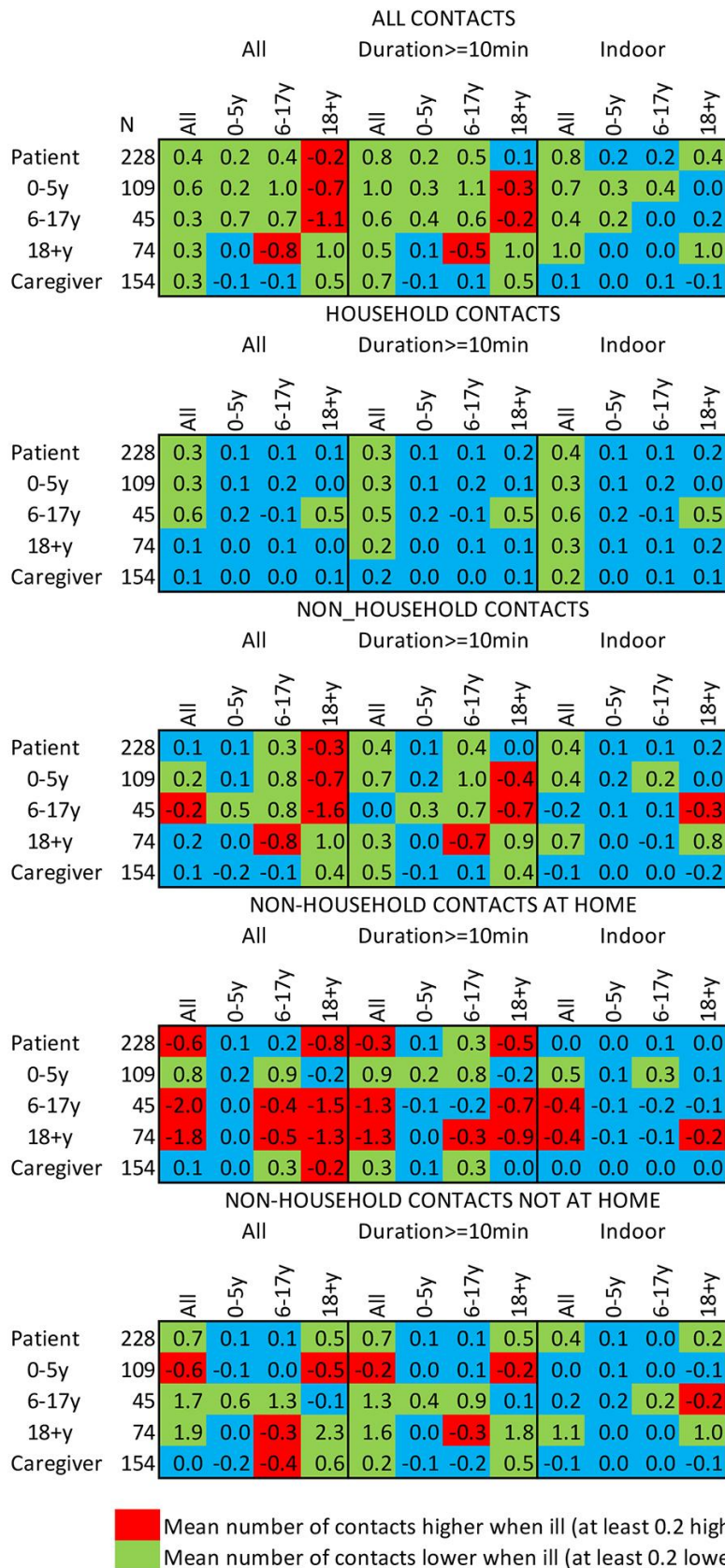


Figure 3. Matrices of mean difference in number of household and non-household contacts when well compared to when ill (the day after the clinic visit) by age group and setting. Restricted to those seen on the same day of the week at each visit.