

5. McElhinney L, Fooks AR, Featherstone C, Smith R, Morgan D. Hantavirus (Seoul virus) in pet rats: a zoonotic viral threat. *Vet Rec.* 2016;178:171–2. <https://doi.org/10.1136/vr.i817>
6. Reynes JM, Carli D, Bour JB, Boudjeltia S, Dewilde A, Gerbier G, et al. Seoul virus infection in humans, France, 2014–2016. *Emerg Infect Dis.* 2017;23:973–7. <https://doi.org/10.3201/eid2306.160927>
7. Hofmann J, Weiss S, Kuhns M, Zinke A, Heinsberger H, Kruger DH. Importation of human Seoul virus infection to Germany from Indonesia. *Emerg Infect Dis.* 2018;24:1099–102. <https://doi.org/10.3201/eid2406.172044>
8. Swanink C, Reimerink J, Gisolf J, de Vries A, Claassen M, Martens L, et al. Autochthonous human case of Seoul virus infection, the Netherlands. *Emerg Infect Dis.* 2018;24:2158–63. <https://doi.org/10.3201/eid2412.180229>
9. Weiss R, Meersch M, Pavenstädt HJ, Zarbock A. Acute kidney injury. *Dtsch Arztebl Int.* 2019;116:833–42.
10. Klempa B, Fichet-Calvet E, Lecompte E, Auste B, Aniskin V, Meisel H, et al. Hantavirus in African wood mouse, Guinea. *Emerg Infect Dis.* 2006;12:838–40. <https://doi.org/10.3201/eid1205.051487>

---

Address for correspondence: Jörg Hofmann, Institute of Virology, Helmut-Ruska-Haus, Charité – Universitätsmedizin Berlin, Charitéplatz 1, 10117 Berlin; Germany. e-mail: joerg.hofmann@charite.de

---

## Pediatric Lyme Disease Biobank, United States, 2015–2020

Lise E. Nigrovic, Desire N. Neville, Fran Balamuth, Michael N. Levas, Jonathan E. Bennett, Anupam B. Kharbanda, Amy D. Thompson, John A. Branda, Aris C. Garro, the Pedi Lyme Net Working Group

Author affiliations: Boston Children's Hospital, Boston, Massachusetts, USA (L.E. Nigrovic); Children's Hospital of Pittsburgh, Pittsburgh, Pennsylvania, USA (D.N. Neville); Milwaukee Children's Hospital, Milwaukee, Wisconsin, USA (F. Balamuth); Children's Hospital of Philadelphia, Philadelphia, Pennsylvania, USA (M.N. Levas); Nemours/Alfred I. duPont Children's Hospital, Wilmington, Delaware, USA (J.E. Bennett, A.D. Thompson); Children's Minnesota, Minneapolis, Minnesota, USA (A.B. Kharbanda); Massachusetts General Hospital, Boston (J.A. Branda); Rhode Island Hospital, Providence, Rhode Island, USA (A.C. Garro)

DOI: <https://doi.org/10.3201/eid2612.200920>

In 2015, we founded Pedi Lyme Net, a pediatric Lyme disease research network comprising 8 emergency departments in the United States. Of 2,497 children evaluated at 1 of these sites for Lyme disease, 515 (20.6%) were infected. This network is a unique resource for evaluating new approaches for diagnosing Lyme disease in children.

Children are disproportionately affected by Lyme disease, which is diagnosed in  $\approx 300,000$  persons in the United States each year (1). Clinicians diagnose Lyme disease using a 2-tier examination of enzyme immunoassay (EIA) and immunoblot results. Current Lyme disease diagnostic tests have well-described limitations that include false negatives early in disease (3) and inability to distinguish between resolved, active, and recurrent infections (4). Clinicians must also wait several days for Lyme disease serologic results, a delay that might contribute to late or unnecessary treatment with antimicrobial drugs. The increased incidence of Lyme disease, limitations of current tests, and lack of studies in children demonstrate the need for a systematic approach to Lyme disease diagnosis in children.

Developing improved diagnostic techniques relies on biobanks of samples collected from patients with Lyme disease and clinical mimics (i.e., patients with similar signs and symptoms caused by non-Lyme illnesses). The US Centers for Disease Control and Prevention (Atlanta, GA, USA) curated the first Lyme disease biobank with samples from 86 adults with Lyme disease, 144 clinical mimics, and 203 healthy controls from 11 collection sites (5). The Study of Lyme Disease Immunology and Clinical Events (<http://www.slicestudies.org>) at the Johns Hopkins Lyme Disease Research Center (Baltimore, MD, USA) enrolled 40 adults with an erythema migrans (EM) lesion and followed up with patients for 1 year. The Lyme Disease Biobank, supported by the Bay Area Lyme Foundation, has enrolled 550 adults with Lyme disease evaluated at 7 primary-care collection sites (6). To date, none of these biobanks have included children or used emergency departments for enrollment.

In 2015, we founded Pedi Lyme Net, a pediatric Lyme disease research network comprising 8 emergency departments in a diverse range of areas to which Lyme disease is endemic. We conducted a prospective cohort study of children evaluated for Lyme at 1 of these emergency departments (Appendix Figure 1, <https://wwwnc.cdc.gov/EID/article/26/12/20-0920-App1.pdf>). The Pediatric Lyme Disease Biobank, housed at Boston Children's Hospital (Boston, MA, USA), stores and distributes the biosamples collected from enrolled children (7).

**Table.** Characteristics of enrolled children with Lyme disease and clinical mimics, United States, 2015–2020\*

Characteristics	Lyme disease	Clinical mimics	p value
Total	515	1,982	
<b>Demographics</b>			
Median age, y (IQR)	8 (6–11)	9 (5–14)	0.02
<b>Sex</b>			
M	345 (67.0)	1,048 (52.9)	<0.01
F	170 (33.0)	934 (47.1)	
<b>Race</b>			
White	438 (85.0)	1,482 (74.8)	<0.01
Black	42 (8.2)	255 (12.9)	
Asian	8 (1.6)	53 (2.7)	
Pacific Islander	0	3 (0.1)	
Native American	0	2 (0.1)	
Other	22 (4.3)	156 (7.9)	
Missing data	5 (1.0)	31 (1.6)	
<b>Ethnicity</b>			
Hispanic	33 (6.4)	234 (11.8)	<0.01
Non-Hispanic	480 (93.2)	1,734 (87.5)	
Missing data	2 (0.4)	14 (0.7)	
<b>History</b>			
Presentation during peak Lyme season†	343/515 (66.6)	1,187/1,982 (59.9)	<0.01
Previous Lyme disease	47/514 (9.1)	79/1,945 (4.1)	<0.01
Tick bite within past year	73/468 (15.6)	150/1,808 (8.3)	<0.01
Fever	176/507 (34.7)	732/1,959 (37.4)	0.35
Headache	152/510 (29.8)	760/1,926 (39.5)	<0.01
<b>Examination</b>			
Erythema migrans lesion	54 (10.5)	NA	NA
Facial palsy	59 (11.5)	158 (8.0)	<0.01
Lumbar puncture performed	47 (9.1)	155 (7.8)	0.33
Meningitis	21/47 (44.7)	57/155 (36.8)	
Arthritis (joint swelling)	286 (55.5)	556 (28.1)	<0.01

\*Values are no. (%) except as indicated. NA, not applicable.

†June–October.

We describe enrolled children 1–21 years of age who underwent emergency department evaluation for Lyme disease during June 1, 2015–January 31, 2020 (Table). We obtained informed consent from parents/guardians for study participation and child assent for those  $\geq 8$  years of age. Informed consent documents were available in English and Spanish. We defined disease stage on the basis of signs and symptoms: early (i.e., single EM lesion), early disseminated (i.e., multiple EM lesions, cranial neuritis, meningitis, or carditis) or late (i.e., arthritis or arthralgia). In addition, as asymptomatic controls, we enrolled children undergoing intravenous cannulation for procedural sedation for fracture reduction or laceration repair without acute infectious symptoms. We implemented standard operating procedures at each of the participating sites (Appendix Table). All deidentified data were collected electronically with Research Electronic Data Capture housed at Harvard University (<https://catalyst.harvard.edu/services/redcap>).

We defined Lyme disease on the basis of an EM lesion diagnosed by the treating clinician or positive serologic results with compatible symptoms. We took serum samples from all enrolled patients, including asymptomatic controls, and conducted a C6 EIA on each sample. If the EIA results were positive or

equivocal, we also conducted a Western immunoblot interpreted using standard criteria (8). We considered a positive IgM immunoblot paired with a negative IgG immunoblot to be positive only if symptoms lasted  $\leq 30$  days (10). We classified symptomatic children who tested negative for Lyme disease as clinical mimics. We compared characteristics of children with Lyme disease and mimics using the  $\chi^2$  test for categorical variables and the Mann-Whitney test for continuous variables with SPSS Statistics 23.0 (IBM Corp., <https://www.ibm.com>).

We enrolled and obtained samples from 2,497 symptomatic and 377 asymptomatic control patients (Appendix Figure 2). Overall, 515 (20.6% of symptomatic patients) had Lyme disease; of these children, 46 (8.9%) had an EM lesion alone, 461 (89.5%) had a positive 2-tier serology alone, and 8 (1.6%) had both. Of the asymptomatic control patients, 4 (1.1%) had positive 2-tier serology.

Our Pediatric Lyme Disease Biobank is unique because it includes biosamples from pediatric patients, clinical mimics, and diverse geographic regions. The samples are linked to demographic, clinical, laboratory, and treatment data about each patient. With  $>2,800$  children enrolled, this biobank is a unique resource for researching Lyme disease diagnosis in children.

Our biobank has a few limitations. First, we enrolled a convenience sample of children depending on the availability of study staff. However, in this study, the proportion of children with Lyme disease did not differ between enrolled and unenrolled but eligible patients. Second, some children with early or early-disseminated Lyme disease might have had false negative serologic results. However, we conducted follow-up to identify children who had initially negative 2-tier Lyme serologic results but tested positive within 30 days of enrollment. Finally, because our network includes only 8 enrollment sites, we were unable to include all regions to which Lyme disease is endemic.

### Acknowledgments

We would like to thank patients and families who agreed to participate in the study.

This study received funding from Boston Children's Hospital and Global Lyme Alliance.

Interested collaborators should contact Pedi Lyme Net to discuss potential collaborations.

### About the Author

Dr. Nigrovic is an associate professor of Pediatrics and Emergency Medicine at Harvard Medical School. Her research interests include the diagnosis of Lyme disease in children.

### References

- Hinckley AF, Connally NP, Meek JL, Johnson BJ, Kemperman MM, Feldman KA, et al. Lyme disease testing by large commercial laboratories in the United States. *Clin Infect Dis*. 2014;59:676–81. <https://doi.org/10.1093/cid/ciu397>
- Wormser G-PP, Dattwyler R-JJ, Shapiro E-DD, Halperin JJ, Steere AC, Klemmner MS, et al. The clinical assessment, treatment, and prevention of Lyme disease, human granulocytic anaplasmosis, and babesiosis: clinical practice guidelines by the Infectious Diseases Society of America. *Clin Infect Dis*. 2006;43:1089–134. <https://doi.org/10.1086/508667>
- Branda JA, Body BA, Boyle J, Branson BM, Dattwyler RJ, Fikrig E, et al. Advances in serodiagnostic testing for Lyme disease are at hand. *Clin Infect Dis*. 2018;66:1133–9. <https://doi.org/10.1093/cid/cix943>
- Garro A, Bennett J, Balamuth F, Levas MN, Neville D, Branda JC, et al.; Pedi Lyme Net. Positive 2-tiered Lyme disease serology is uncommon in asymptomatic children living in endemic areas of the United States. *Pediatr Infect Dis J*. 2019;38:e105–7. <https://doi.org/10.1097/INF.0000000000002157>
- Molins CR, Sexton C, Young JW, Ashton LV, Pappert R, Beard CB, et al. Collection and characterization of samples for establishment of a serum repository for Lyme disease diagnostic test development and evaluation. *J Clin Microbiol*. 2014;52:3755–3762. <https://doi.org/10.1128/JCM.01409-14>
- Horn EJ, Dempsey G, Schotthoefer AM, Prisco UL, McArdle M, Gervasi SS, et al. The Lyme Disease Biobank: characterization of 550 patient and control samples from the East Coast and Upper Midwest of the United States. *J Clin Microbiol*. 2020;58:1–12.
- Boston Children's Hospital. Pedi Lyme Net. 2020 [cited 2020 Aug 3]. <http://www.childrenshospital.org/research/centers-departmental-programs/Pedi-Lyme-Net>
- Centers for Disease Control and Prevention. Recommendations for test performance and interpretation from the Second National Conference on Serologic Diagnosis of Lyme Disease. *MMWR Morb Mortal Wkly Rep*. 1995;44:590–1.
- Nowakowski J, Schwartz I, Liveris D, Wang G, Aguero-Rosenfeld ME, Girao G, et al.; Lyme Disease Study Group. Laboratory diagnostic techniques for patients with early Lyme disease associated with erythema migrans: a comparison of different techniques. *Clin Infect Dis*. 2001;33:2023–7. <https://doi.org/10.1086/324490>
- Lantos PM, Lipsett SC, Nigrovic LE. False positive Lyme disease IgM immunoblots in children. *J Pediatr*. 2016;174:267–269.e1. <https://doi.org/10.1016/j.jpeds.2016.04.004>

Address for correspondence: Lise Nigrovic, Division of Emergency Medicine, Boston Children's Hospital, 300 Longwood Avenue, Boston, MA 02115, USA; email: [lise.nigrovic@childrens.harvard.edu](mailto:lise.nigrovic@childrens.harvard.edu)

## Transmission Electron Microscopy Confirmation of *Orientia tsutsugamushi* in Human Bile

Yujeong Lee,<sup>1</sup> Seung Il Kim,<sup>1</sup> Yoon-sun Yi, Hayoung Lee, Joo-Hee Hwang, Edmond Changkyun Park, Sangmi Jun,<sup>2</sup> Chang-Seop Lee<sup>2</sup>

Author affiliations: Korea Basic Science Institute, Cheongju, South Korea (Y. Lee, S.I. Kim, Y.-s. Yi, H. Lee, E.C. Park, S. Jun); Korea Research Institute of Chemical Technology, Daejeon, South Korea (Y. Lee, S.I. Kim, E.C. Park, S. Jun); University of Science and Technology, Daejeon (S.I. Kim, H. Lee, E.C. Park); Jeonbuk National University, Jeonju, South Korea (J.-H. Hwang, C.-S. Lee); Jeonbuk National University Hospital, Jeonju (J.-H. Hwang, C.-S. Lee)

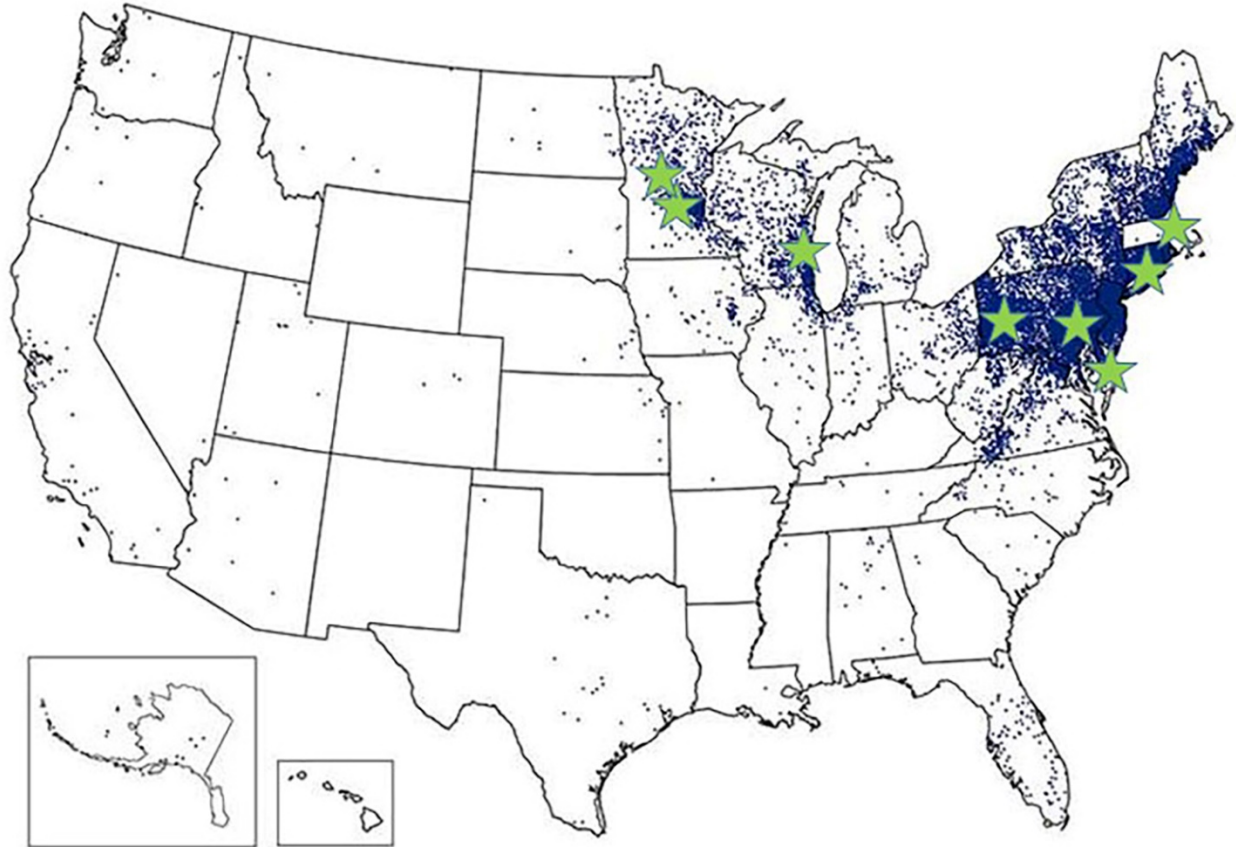
<sup>1</sup>These authors contributed equally to this article.

<sup>2</sup>These authors were co-principal investigators.

# Pediatric Lyme Disease Biobank, United States, 2015–2020

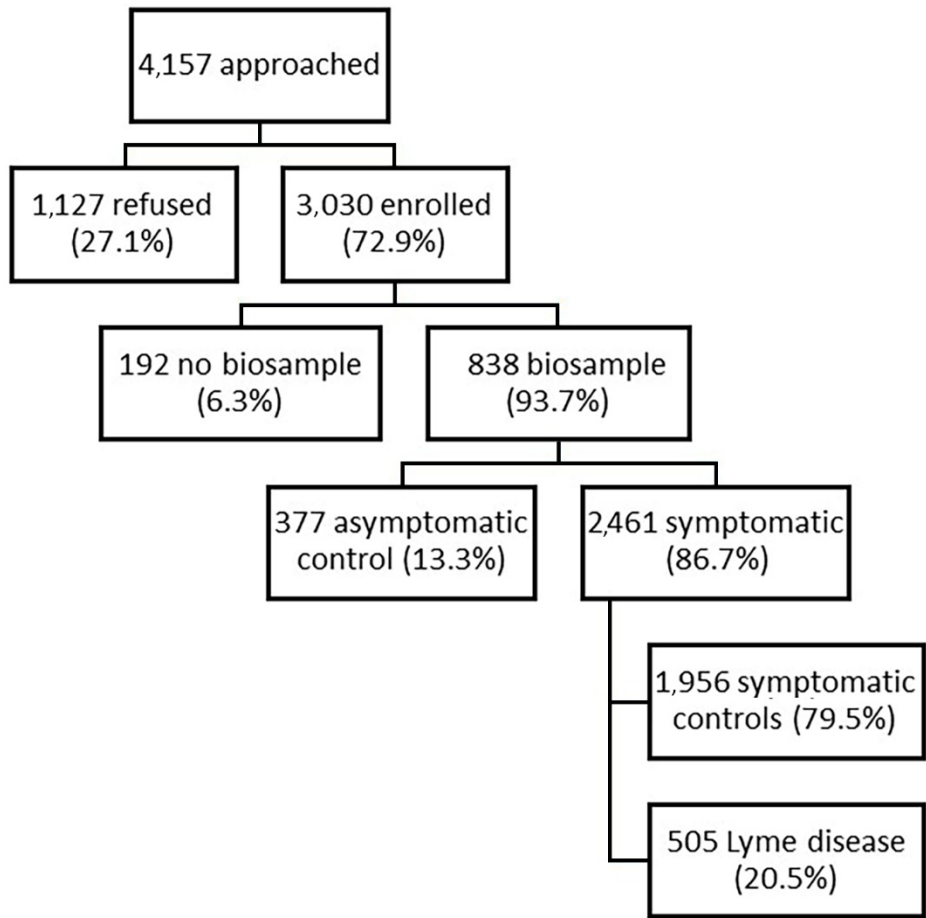
**Appendix Table.** Variables analyzed in children evaluated for Lyme Disease, United States, 2015–2020

Variable	Subcategories
Demographics	Age, gender, race, ethnicity
History	History of previous Lyme and timing, antimicrobial pretreatment and duration, recognized tick bite, fever, headache, arthralgia
Examination	Erythema migrans lesion(s) number and size, meningismus, cranial nerve palsy, joint swelling, clinician suspicion of Lyme disease (10-point scale)
Follow-up (30 d)	Treatment received, outcome
Medical record review	
Management	Antimicrobial treatment, hospitalization, procedures performed, complications
Lyme testing ( $\leq 30$ d)	Lyme serology, Lyme PCR
Laboratory studies	Complete blood cell count, C-reactive protein, erythrocyte sedimentation rate, cerebrospinal fluid results, synovial fluid results
Microbiology results	Blood, synovial, and spinal fluid cultures
Biosamples	
Samples collected	Serum, plasma, whole blood, RNA, urine
Test type	C6 enzyme-linked immunoassay, immunoblot



1 dot placed randomly within county of residence for each confirmed case

**Appendix Figure 1.** Pedi Lyme Net enrollment centers, United States, 2015–2020. Figure created using the 2019 Centers for Disease Control and Prevention Lyme disease map. Blue dots indicate the county of residence for every reported Lyme disease case. Green stars indicate Pedi Lyme Net 2020 enrollment centers.



**Appendix Figure 2.** Flowchart showing characteristics of Pedi Lyme Net study patients, United States, June 2015– March 2020.