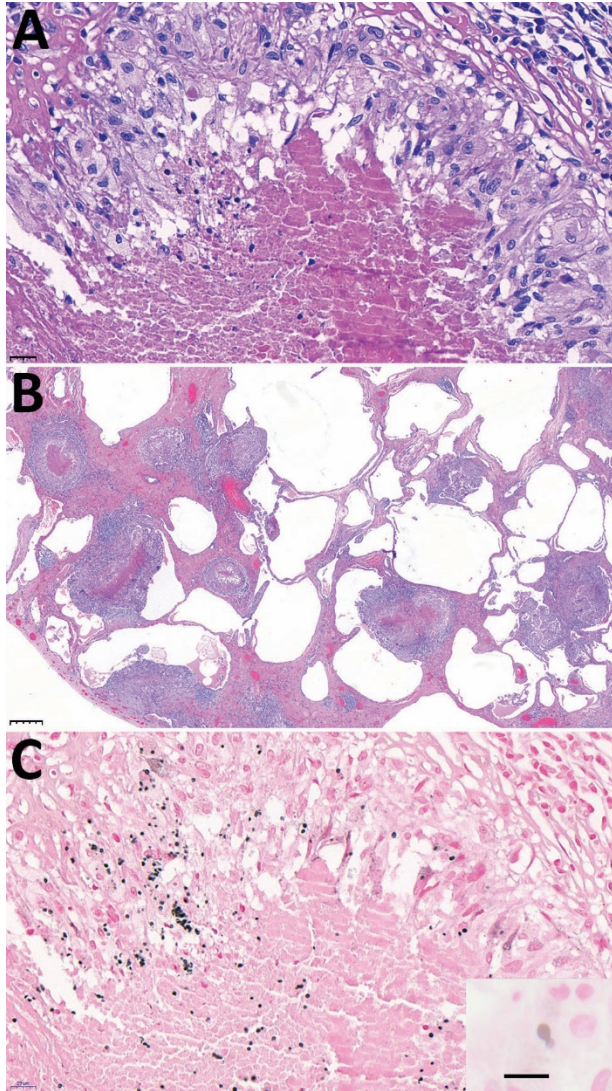


# Autochthonous Case of Pulmonary Histoplasmosis, Switzerland

## Appendix



**Appendix Figure.** Diagnostic wedge-biopsy establishing diagnosis of pulmonary histoplasmosis. A) (hematoxylin and eosin staining; 20× magnification) Overview of the diagnostic wedge-biopsy showing emphysema, fibrosis, and necrotizing granulomas. B) Higher magnification (hematoxylin and eosin staining; 400×) highlights the necrosis and the surrounding histiocytic wall. C) (400× magnification) Grocott silver staining discloses the ovoid histoplasma organisms (black staining).