

MIS-A can occur after the acute phase of SARS-CoV-2 infection. The only symptom at the time of infection was olfactory disturbance, which is similar to other case reports of MIS-A occurring in asymptomatic or minimally symptomatic patients (5).

It has been reported that MIS-A can cause symptoms similar to those of Kawasaki disease (6). This case did not meet the American College of Cardiology criteria for Kawasaki disease (7) but did meet the definition of incomplete Kawasaki disease. Conjunctivitis persisted for 4 weeks after the onset of MIS-A and gradually improved.

In February 2021, a case definition was proposed for reporting cases of multisystem inflammatory syndrome in adults and children after vaccination (8). Considering the possibility that the disease develops after asymptomatic SARS-CoV-2 infection and that increased IgG levels can be involved, MIS-A is rare, but the disease concept of MIS-A should be widely acknowledged. Clinicians should consider obtaining detailed history and examining SARS-CoV-2 IgG levels for cases of severe inflammatory disease with unexplained cardiac decompensation.

### Acknowledgments

We thank Shinichi Kimura and Yurie Yamazaki for intensive care, and we thank the clinical staff at National Hospital Organization Tokyo Medical Center for their dedicated clinical practice and patient care.

### About the Author

Dr. Yasuhiro Yamada is a physician at National Hospital Organization Tokyo Medical Center, Tokyo, Japan. His research interests include general internal medicine and health economics.

### References

- Godfred-Cato S, Bryant B, Leung J, Oster ME, Conklin L, Abrams J, et al.; California MIS-C Response Team. COVID-19-associated multisystem inflammatory syndrome in children—United States, March–July 2020. *MMWR Morb Mortal Wkly Rep.* 2020;69:1074–80. <https://doi.org/10.15585/mmwr.mm6932e2>
- Belot A, Antona D, Renolleau S, Javouhey E, Hentgen V, Angoulvant F, et al. SARS-CoV-2-related paediatric inflammatory multisystem syndrome, an epidemiological study, France, 1 March to 17 May 2020. *Euro Surveill.* 2020;25:2001010. <https://doi.org/10.2807/1560-7917.ES.2020.25.22.2001010>
- Whittaker E, Bamford A, Kenny J, Kafrou M, Jones CE, Shah P, et al.; PIMS-TS Study Group and EUCLIDS and PERFORM Consortia. Clinical characteristics of 58 children with a pediatric inflammatory multisystem syndrome temporally associated with SARS-CoV-2. *JAMA.* 2020;324:259–69. <https://doi.org/10.1001/jama.2020.10369>
- Morris SB, Schwartz NG, Patel P, Abbo L, Beauchamps L, Balan S, et al. Case series of multisystem inflammatory syndrome in adults associated with SARS-CoV-2 infection—United Kingdom and United States, March–August 2020. *MMWR Morb Mortal Wkly Rep.* 2020;69:1450–6. <https://doi.org/10.15585/mmwr.mm6940e1>
- Hékimian G, Kerneis M, Zeitouni M, Cohen-Aubart F, Chommeloux J, Bréchet N, et al. Coronavirus disease 2019 acute myocarditis and multisystem inflammatory syndrome in adult intensive and cardiac care units. *Chest.* 2021; 159:657–62. <https://doi.org/10.1016/j.chest.2020.08.2099>
- Shaigany S, Gnirke M, Guttman A, Chong H, Meehan S, Raabe V, et al. An adult with Kawasaki-like multisystem inflammatory syndrome associated with COVID-19. *Lancet.* 2020;396:e8–10. [https://doi.org/10.1016/S0140-6736\(20\)31526-9](https://doi.org/10.1016/S0140-6736(20)31526-9)
- McCrindle BW, Rowley AH, Newburger JW, Burns JC, Bolger AF, Gewitz M, et al.; American Heart Association Rheumatic Fever, Endocarditis, and Kawasaki Disease Committee of the Council on Cardiovascular Disease in the Young; Council on Cardiovascular and Stroke Nursing; Council on Cardiovascular Surgery and Anesthesia; and Council on Epidemiology and Prevention. Diagnosis, treatment, and long-term management of Kawasaki disease: a scientific statement for health professionals from the American Heart Association. *Circulation.* 2017;135:e927–99. <https://doi.org/10.1161/CIR.0000000000000484>
- Vogel TP, Top KA, Karatzios C, Hilmers DC, Tapia LI, Mocerri P, et al. Multisystem inflammatory syndrome in children and adults (MIS-C/A): case definition & guidelines for data collection, analysis, and presentation of immunization safety data. *Vaccine.* 2021 Feb 25 [Epub ahead of print].

Address for correspondence: Yasuhiro Yamada, Department of General Internal Medicine, National Hospital Organization Tokyo Medical Center, Tokyo, 152-8902, Japan; email: yayamada0113@gmail.com

## Changing Molecular Epidemiology of Hepatitis A Virus Infection, United States, 1996–2019

Sumathi Ramachandran, Guo-Liang Xia, Zoya Dimitrova, Yulin Lin, Martha Montgomery, Ryan Augustine, Saleem Kamili, Yury Khudyakov

Author affiliation: Centers for Disease Control and Prevention, Atlanta, Georgia, USA

DOI: <https://doi.org/10.3201/eid2706.203036>

Hepatitis A virus (HAV) genotype IA was most common among strains tested in US outbreak investigations and surveillance during 1996–2015. However, HAV genotype IB gained prominence during 2016–2019 person-to-person multistate outbreaks. Detection of previously uncommon strains highlights the changing molecular epidemiology of HAV infection in the United States.

**H**epatitis A virus (HAV) is transmitted primarily through person-to-person contact or exposure to contaminated food or water. After the introduction of hepatitis A vaccine recommendations in the United States in 1996, reports of hepatitis A cases decreased progressively from 1999 to 2011 by a total of  $\approx 95\%$  (1,2). However, we recently showed that hepatitis A cases increased 294% during 2016–2018 compared with 2013–2015 among persons who use drugs (injection or noninjection), persons experiencing homelessness, or men who have sex with men (3,4).

HAV strains infecting humans are genetically classified into genotypes I, II, and III. Genotype I is further divided into subtypes A, B, and C, and genotypes II and III are divided into subtypes A and B. In this study, we investigated HAV genotype and strain distributions in the United States during 1996–2019.

Genetic testing was performed by using DNA sequencing, and we included HAV sequences obtained from 9,203 specimens collected during outbreak investigations and surveillance activities conducted by the Centers for Disease Control and Prevention (CDC) or state health departments during 1996–2019 (Appendix Table, <https://wwwnc.cdc.gov/EID/article/27/6/20-3036-App1.pdf>). We performed phylogenetic analysis of a 315 base-pair fragment of the HAV viral protein 1-amino terminus of 2B genomic region amplified from serum specimens (Appendix Figure 1).

We found that during 1996–2015, HAV genotype IA was most common among specimens collected through

surveillance (93%; 1,587/1,706) and outbreak investigations (84.4%; 706/836); genotype IB was detected among only 6.4% (110/1,706) of surveillance and 15.2% (127/836) of outbreak specimens. Genotype IIIA was detected in  $\leq 0.5\%$  of both collections (Table). During 2016–2019, a total 6,661 outbreak specimens were collected from many states across the country (Appendix Figure 2). Sequences from these outbreaks represented  $\approx 19\%$  of all HAV cases reported to CDC through the National Notifiable Diseases Surveillance System (4),  $\approx 3$  times more specimens than were collected during 1996–2015. Among the 6,661 specimens collected during 2016–2019, genotype IA was identified in 15.7% of specimens, IB in 82.8%, and IIIA in 1.5% (Table).

Among all 9,203 tested specimens, we identified 1,055 HAV strains that we defined as having unique genetic variants; 352 (33.4%) HAV strains were identified from specimens collected during 2016–2019 (Figure). Genetic analyses demonstrate that 63.4% ( $n = 102$ ) of genotype IB strains and 40% ( $n = 6$ ) of genotype IIIA strains identified during 2016–2019 belonged to 2 large genetic clusters or groups of closely related HAV strains (Figure), but genotype IA strains were distributed among many small genetic clusters.

The CDC-developed Global Hepatitis Outbreak and Surveillance Technology (GHOST) system improved molecular testing capabilities of state and local health departments during the 2016–2019 multistate outbreaks. Molecular epidemiologic methods have helped clarify HAV transmissions within networks of persons with similar risk factors (5). By using genetic testing, CDC has assisted in 25 outbreak investigations associated with a common source transmission by contaminated food (6,7) and person-to-person transmissions (8,9).

For 20 years (1996–2016), during the national decrease in HAV cases attributed to increased vaccination, genotype IA was the most detected genotype. However, genotype IB cases associated with

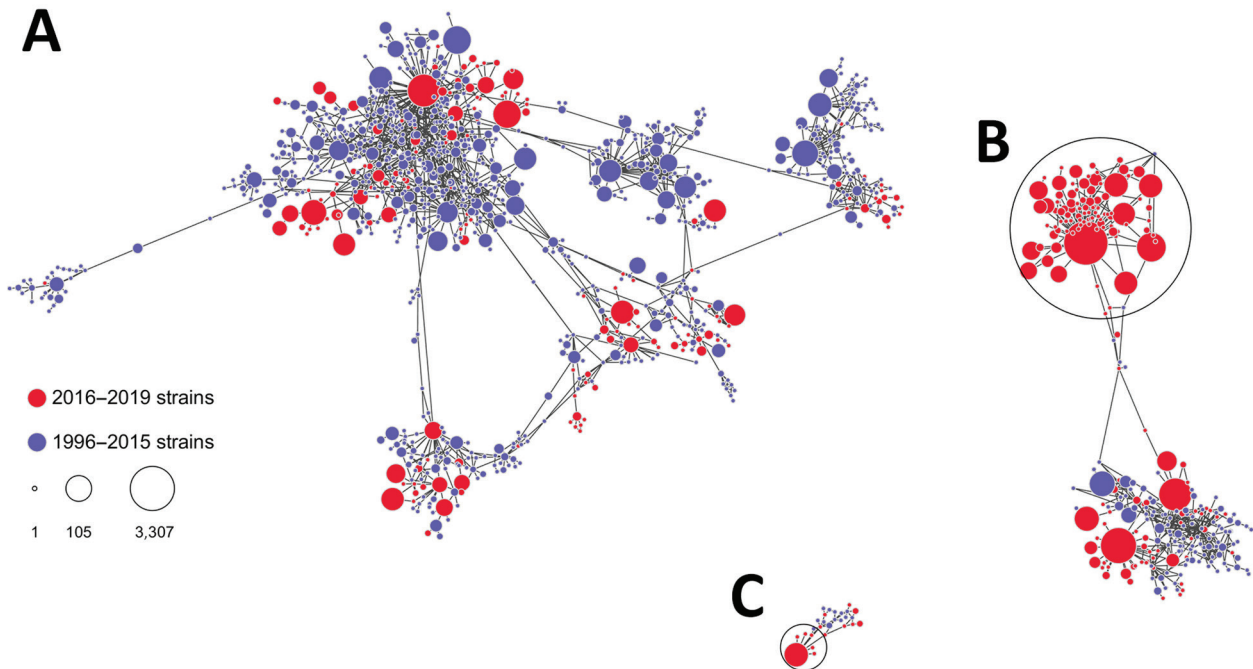
**Table.** Genotype distribution of HAV specimens collected through surveillance programs and outbreak investigations, United States, 1996–2019\*

Year	No. (%) HAV surveillance specimens †				No. (%) HAV outbreak specimens ‡				No. (%) HAV specimens			
	Total	IA	IB	IIIA	Total	IA	IB	IIIA	Total	IA	IB	IIIA
1996–2015	1,706	1,587 (93.0)	110 (6.4)	9 (0.5)	836	706 (84.4)	127 (15.2)	3 (0.4)	2,542	2,293 (90.2)	237 (9.3)	12 (0.5)
2016–2019		ND			6,661	1,046 (15.7)	5,518 (82.8)	97 (1.5)	6,661	1,046 (15.7)	5,518 (82.8)	97 (1.5)

\*Since 2014, the United States has not had established HAV surveillance programs in place to provide specimens for molecular testing of surveillance cases. Specimens collected as part of outbreak investigations during 2016–2019, might include some sporadic cases. During 1996–2015,  $\approx 130$  HAV specimens/year were tested; during 2016–2019, 1,660 specimens/year were tested. HAV, hepatitis A virus; ND, no data.

†Surveillance specimens tested by the Centers for Disease Control and Prevention (CDC) during 1996–2013 included sentinel county surveillance ( $n = 1,234$ ) during 1996–2006; the Emerging Infectious Disease Program ( $n = 418$ ) during 2007–2013; and the Border Infectious Disease Surveillance ( $n = 54$ ) system during 2007–2013.

‡Outbreak specimens sequenced during 1996–2015 ( $n = 836$ ) were tested by CDC. Outbreak specimens sequenced during 2016–2019 ( $n = 6,661$ ) included data from CDC testing ( $n = 5,068$ ) and data captured through technical assistance offered to sites, which included data from Sanger sequences reported to CDC for technical assistance and analysis from state and local public health laboratories ( $n = 341$ ) and the Food and Drug Administration ( $n = 3$ ); data from ultradeep sequencing and submission to the Global Hepatitis Outbreak and Surveillance Technology portal by state and local public health laboratories ( $n = 1,249$ ).



**Figure.** Genetic relatedness among hepatitis (HAV) strains, United States, 1996–2019. A) IA strains; B) IB strains; C) IIIA strains. Nodes represent HAV strains, and the size of node is proportional to the frequency of the strain; larger nodes denote more frequent detection. Distance between nodes approximates genetic closeness of HAV strains. Genetic clusters of closely related HAV strains encompassing a large fraction of all strains in HAV genotypes IB and IIIA are circled. Visualization created by using Gephi software (<https://gephi.org>).

outbreaks in multiple states increased during 2016–2019. During that time, IB became the most common genotype, detected in 83% of specimens collected across many states (Appendix Figure 2).

Findings from the National Health and Nutrition Examination Surveys during 1999–2012 revealed that despite the overall increase in HAV antibody among children, prevalence of HAV antibody among US-born adults was low (24%), indicating decreasing immunity to HAV (10). However, our molecular data indicate that the increase in number of HAV cases observed in outbreaks during 2016–2019 might not be attributable solely to the decline in the population's HAV immunity. Because HAV genotype IA was dominant in the United States for years, the large person-to-person outbreaks during 2016–2019 reasonably could be expected to be caused by genotype IA strains widely circulating in the country, but our genetic analysis shows predominance of the previously rare HAV genotype IB strains. Identification of 1 large cluster and several small genetic clusters suggests  $\geq 1$  introduction of genotype IB to the affected population in multiple states during 2016–2019. On the basis of these findings, we hypothesize that genotype IB was introduced from regions of the world where these strains are endemic and could be responsible

for initiation of the outbreaks among vulnerable populations (Appendix Figure 3). GHOST was instrumental in identifying changes in molecular epidemiology of HAV infections and is an example of novel emerging technologies that can be used for national viral hepatitis molecular surveillance program.

Our observations are hallmarks of a change in HAV molecular epidemiology in the United States. GHOST technology is improving hepatitis detection at the state and local level. Our findings emphasize the need for systematic HAV surveillance for strain characterization, timely detection of transmission clusters, and assistance in guiding public health interventions and vaccination efforts.

#### Acknowledgments

We thank members of the CDC National Center for HIV/AIDS, Viral Hepatitis, STD, and TB Prevention, Division of Viral Hepatitis, Laboratory Branch; the Global Hepatitis Outbreak and Surveillance Technology (GHOST) Team; HAV Outbreak Incident Management Team; US Food and Drug Administration CORE Signals Teams; state and local public health laboratories participating as GHOST ultradeep sequencing testing sites, including the following: Brett Austin, Syreeta Steele, Tracy Basler, and Jovan Shepherd (San Diego County Public Health Laboratory, San Diego,

California, USA); Courtney Edwards, Teresa R. Fields, Matthew Johnson, and Vaneet Arora (Kentucky Department for Public Health); Erica Reaves, Jeannette P. Dill, Katie Nixon, Linda S. Thomas, Victoria N. Stone, and Xiaorong Qian (Tennessee Department of Health); Joseph Yglesias and Ian Stryker (Florida Department of Health, Bureau of Public Health Laboratories); Andrea Leapley (Florida Department of Health, Bureau of Epidemiology); Daryl Lamson, Patrick Bryant, and Kirsten St. George (New York State Department of Health); Sharmila Talekar, Oxana Mazurova, Kim Kilgour, and Elizabeth Franko (Georgia Department of Public Health Laboratory); and state departments of health reporting Sanger sequences as part of technical assistance, including Will Probert, Carlos Gonzalez, and Jill K Hacker (California Department of Public Health [CDPH]) and the CDPH Hepatitis A Epidemiology Team; Michigan State Department of Health; Elizabeth Cebelinski (Minnesota Department of Health); and Jacqueline Woods (US Food and Drug Administration).

## About the Author

Dr. Ramachandran is a senior scientist in the National Center for HIV, Viral Hepatitis, STD, and TB Prevention, Centers for Disease Control and Prevention, Atlanta, Georgia, USA. Her research interests include hepatitis surveillance, outbreak response, public health technical assistance, and strategic partnerships.

## References

- Centers for Disease Control and Prevention. Viral hepatitis surveillance, United States, 2011. Atlanta: The Centers; 2012 [cited 2021 Apr 1]. <https://www.cdc.gov/hepatitis/statistics/2011surveillance/pdfs/2011HepSurveillanceRpt.pdf>
- Ly KN, Klevens RM. Trends in disease and complications of hepatitis A virus infection in the United States, 1999–2011: a new concern for adults. *J Infect Dis.* 2015;212:176–82. <https://doi.org/10.1093/infdis/jiu834>
- Foster MA, Hofmeister MG, Kupronis BA, Lin Y, Xia GL, Yin S, et al. Increase in hepatitis A virus infections – United States, 2013–2018. *MMWR Morb Mortal Wkly Rep.* 2019;68:413–5. <https://doi.org/10.15585/mmwr.mm6818a2>
- Centers for Disease Control and Prevention. Widespread outbreaks of hepatitis A across the United States [cited 2021 Apr 1]. <https://www.cdc.gov/hepatitis/outbreaks/2017March-HepatitisA.htm>
- Nainan OV, Armstrong GL, Han XH, Williams I, Bell BP, Margolis HS. Hepatitis a molecular epidemiology in the United States, 1996–1997: sources of infection and implications of vaccination policy. *J Infect Dis.* 2005;191:957–63. <https://doi.org/10.1086/427992>
- Collier MG, Khudyakov YE, Selvage D, Adams-Cameron M, Epton E, Cronquist A, et al.; Hepatitis A Outbreak Investigation Team. Outbreak of hepatitis A in the USA associated with frozen pomegranate arils imported from Turkey: an epidemiological case study. *Lancet Infect Dis.* 2014;14:976–81. [https://doi.org/10.1016/S1473-3099\(14\)70883-7](https://doi.org/10.1016/S1473-3099(14)70883-7)
- Food and Drug Administration. FDA investigates outbreak of hepatitis A illnesses linked to frozen strawberries. Silver Spring (MD): FDA; 2016 [cited 2021 Apr 1]. <https://www.fda.gov/food/recallsoutbreaksemergencies/outbreaks/ucm518775.html>
- Peak CM, Stous SS, Healy JM, Hofmeister MG, Lin Y, Ramachandran S, et al. Homelessness and Hepatitis A-San Diego County, 2016–2018. *Clin Infect Dis.* 2020;71:14–21. <https://doi.org/10.1093/cid/ciz788>
- Foster M, Ramachandran S, Myatt K, Donovan D, Bohm S, Fiedler J, et al. Hepatitis A virus outbreaks associated with drug use and homelessness – California, Kentucky, Michigan, and Utah, 2017. *MMWR Morb Mortal Wkly Rep.* 2018;67:1208–10. <https://doi.org/10.15585/mmwr.mm6743a3>
- Klebens RM, Denniston MM, Jiles-Chapman RB, Murphy TV. Decreasing immunity to hepatitis A virus infection among US adults: Findings from the National Health and Nutrition Examination Survey (NHANES), 1999–2012. *Vaccine.* 2015;33:6192–8. <https://doi.org/10.1016/j.vaccine.2015.10.009>

---

Address for correspondence: Sumathi Ramachandran, Centers for Disease Control and Prevention, 1600 Clifton Rd NE, Mailstop A33, Atlanta, GA 30329-4027, USA; email: dcq6@cdc.gov

---

## Molecular Typing of *Burkholderia mallei* Isolates from Equids with Glanders, India

Harisankar Singha,<sup>1</sup> Mandy C. Elschner,<sup>1</sup> Praveen Malik, Sheetal Saini, Bhupendra N. Tripathi, Katja Mertens-Scholz, Hanka Brangsch, Falk Melzer, Raj K. Singh, Heinrich Neubauer

Author affiliations: Indian Council of Agricultural Research—National Research Centre on Equines, Haryana, India (H. Singha, S. Saini); Friedrich-Loeffler-Institut Federal Research Institute for Animal Health, Institute for Bacterial Infections and Zoonoses, Jena, Germany (M.C. Elschner, K. Mertens-Scholz, H. Brangsch, F. Melzer, H. Neubauer); Ministry of Fisheries, Animal Husbandry & Dairying, Government of India, New Delhi, India (P. Malik); Indian Council of Agricultural Research, Krishi Bhawan, New Delhi (B.N. Tripathi); Indian Council of Agricultural Research—Indian Veterinary Research Institute, Izatnagar, India (R.K. Singh)

DOI: <https://doi.org/10.3201/eid2706.203232>

<sup>1</sup>These first authors contributed equally to this work.