

Secondary Attack Rate, Transmission and Incubation Periods, and Serial Interval of SARS-CoV-2 Omicron Variant, Spain

Appendix

Appendix Table 1. Secondary attack rates of Omicron and Delta variant of SARS-CoV-2 by setting, vaccine status, and number of close contacts per index case, Cantabria, Spain, December 2021

| Setting | Omicron | | | | Delta | | | | Absolute percentage difference (95% CI) |
|---------------------------------------|-------------|----------------------|-----------------|------------------------|-------------|----------------------|-----------------|-------------------------|---|
| | Index cases | Close contacts (C/C) | Secondary cases | SAR (95% CI) | Index cases | Close contacts (C/C) | Secondary cases | SAR (95% CI) | |
| Global | 333 | 1126 (3.4) | 443 | 39.3% (36.5%–42.2%) | 1403 | 7013 (5) | 1846 | 26.3% (25.3%–27.4%) | 13† (9.9–16.1) |
| Unvaccinated index case-patient | 210 | 655 (3.1) | 269 | 41.1% (37.4%–44.9%) | 535 | 2876 (5.4) | 895 | 31.1%‡ (29.5%–32.8%) | 10†* (5.7–14.2) |
| Vaccinated index case-patient | 111 | 436 (3.9) | 159 | 36.5% (32.1%–41.1%) | 829 | 3904 (4.7) | 910 | 23.3%‡ (22%–24.7%) | 13.2† (8.3–18) |
| Close contacts per index case-patient | | | | | | | | | |
| 1–2 | 182 | 244 | 103 | 42% (36%–48%) | 532 | 761 | 295 | 39% (35%–42%) | 3 (–4–11) |
| 3–4 | 73 | 242 | 109 | 45% (39%–51%) | 375 | 1279 | 428 | 33% (31%–36%) | 12† (5–19) |
| 5–6 | 36 | 195 | 71 | 36% (30%–43%) | 192 | 1048 | 336 | 32% (29%–35%) | 0.04 (–3–12) |
| ≥7 | 42 | 445 | 160 | 36% (32%–41%) | 304 | 3925 | 787 | 20% (19%–21%) | 16† (11–21) |
| Household | 287 | 533 (1.9) | 263 | 49.4% (54%–53.6%) | 1095 | 2350 (2.2) | 1129 | 48% (46%–50%) | 1.3 (–3.4–6) |
| Unvaccinated index case-patient | 187 | 354 (1.9) | 171 | 49.4% (44.2%–54.7%) | 450 | 1118 (2.5) | 595 | 53.2%‡ (50.3%–56%) | –3.8 (–9.8–2.2) |
| Vaccinated index case-patient | 91 | 171 (1.9) | 85 | 49.7% (42.3%–57%) | 622 | 1198 (1.9) | 519 | 43%‡ (40.5%–46%) | 6.4 (–1.6–14.4) |
| Close contacts per index case-patient | | | | | | | | | |
| 1–2 | 211 | 285 | 130 | 46% (40%–51%) | 749 | 1069 | 465 | 43% (41%–46%) | 3 (–05–9) |
| 3–4 | 70 | 218 | 118 | 54% (47%–61%) | 283 | 909 | 416 | 46% (43%–49%) | 8† (1–16) |
| 5–6 | 6 | 30 | 15 | 50% | 54 | 295 | 191 | 65% | –15 |

| Setting | Omicron | | | | Delta | | | | Absolute percentage difference (95% CI) |
|---------------------------------------|-------------|----------------------|-----------------|---------------------------|-------------|----------------------|-----------------|---------------------------|---|
| | Index cases | Close contacts (C/C) | Secondary cases | SAR (95% CI) (33%–67%) | Index cases | Close contacts (C/C) | Secondary cases | SAR (95% CI) (59%–70%) | |
| ≥7 | | | | | 9 | 77 | 57 | 74% (63%–83%) | (–35–6) |
| Social | 143 | 524 (3.7) | 160 | 30.5% (26.8%–34.6%) | 836 | 4153 (5) | 672 | 16.2% (15.1%–17.3%) | 14.4† (10.3–18.5) |
| Unvaccinated index case-patient | 76 | 283 (3.7) | 88 | 31.1% (26%–36.7%) | 315 | 1640 (5.2) | 284 | 17.3% (15.6%–19.2%) | 13.8† (7.9–19.7) |
| Vaccinated index case-patient | 61 | 224 (3.7) | 64 | 28.6% (23.1%–34%) | 495 | 2351 (4.8) | 368 | 15.7% (14.2%–17.2%) | 12.9† (6.6–19.3) |
| Close contacts per index case-patient | | | | | | | | | |
| 1–2 | 78 | 112 | 28 | 25% (18%–34%) | 374 | 535 | 114 | 21% (18%–25%) | 4 (–6 to 13) |
| 3–4 | 30 | 102 | 28 | 27% (20%–37%) | 166 | 576 | 117 | 20% (17%–24%) | 7 (–3 to 17) |
| 5–6 | 17 | 93 | 32 | 34% (26%–45%) | 99 | 536 | 93 | 17% (14%–21%) | 17† (6–28) |
| ≥7 | 18 | 217 | 72 | 33% (27%–40%) | 197 | 2506 | 348 | 14% (0.13%–0.15%) | 19† (13–26) |
| Occupational | 29 | 58 (2) | 18 | 31% (20.6%–43.8%) | 148 | 411 (2.7) | 43 | 10.5% (7.93%–13.8%) | 20.6† (7.3–33.8) |
| Unvaccinated index case-patient | 14 | 22 (1.6) | 8 | 36.4% (19.7%–57%) | 39 | 97 (2.5) | 16 | 16.5%‡ (10.4%–25.1%) | 20.1 (–0.04 to 44.1) |
| Vaccinated index case-patient | 14 | 34 (2.4) | 10 | 29.4% (16.8%–46.1%) | 105 | 298 (2.8) | 21 | 7%‡ (4.7%–10.5%) | 22.4† (5.1–40) |
| Close contacts per index case-patient | | | | | | | | | |
| 1–2 | 21 | 25 | 11 | 44% (27%–63%) | 102 | 131 | 24 | 18% (13%–26%) | 26† (3–49) |
| 3–4 | 6 | 21 | 2 | 10% (3%–29%) | 24 | 80 | 9 | 11% (6%–20%) | –1 (–18 to 14) |
| 5–6 | 1 | 5 | 2 | 40% (12%–77%) | 11 | 60 | 2 | 3% (1%–11%) | 37† (–17 to 91) |
| ≥7 | 1 | 7 | 3 | 43% (16%–75%) | 11 | 140 | 8 | 6% (3%–11%) | 37† (–7 to 82) |

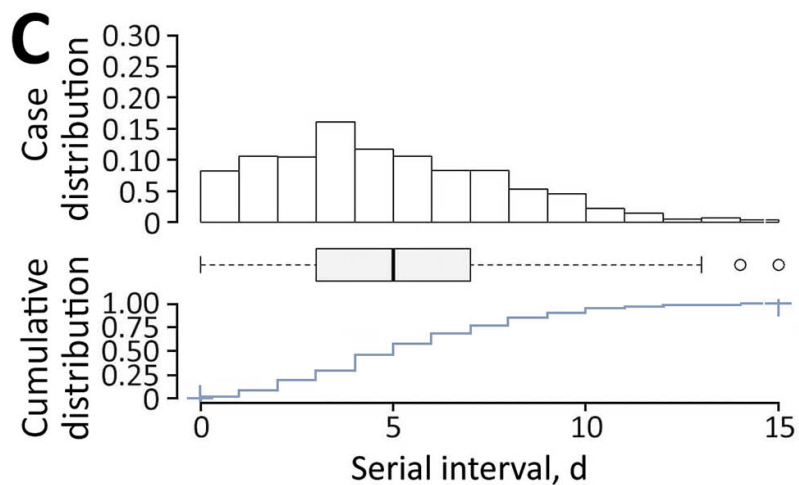
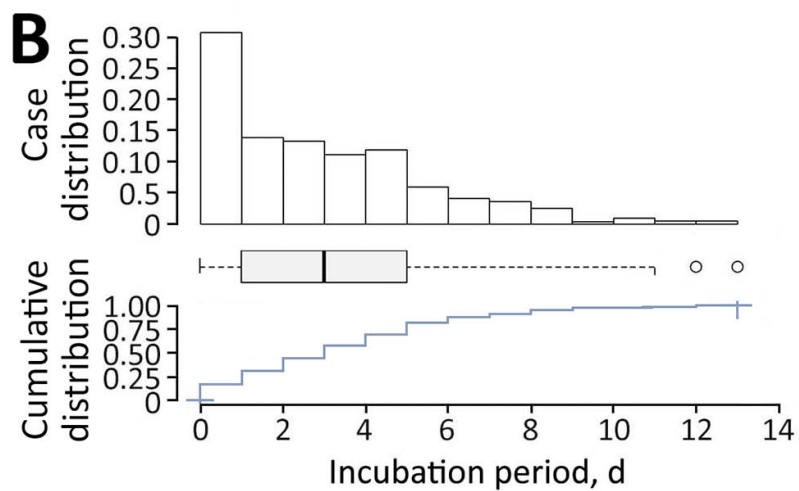
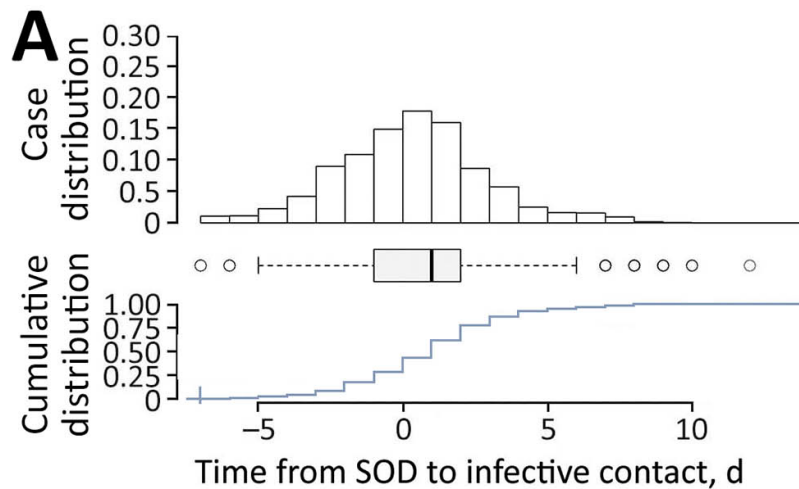
*Settings are household (living in the same house), occupational (workplace) and social (social relations). Contacts in school, hospitals, and nursing homes were excluded. C/C, contacts per case.

†p<0.000.

‡Differences between vaccinated and unvaccinated persons within same-variant context.

Appendix Table 2. Delta and Omicron cases in Cantabria, Spain, who underwent contact-tracing program by age group and vaccination status

| Age group, y | Vaccination status | Delta | | | | Omicron | | | |
|--------------|--------------------|-------|--------------|--------------------|-----|---------|--------------|--------------------|-----|
| | | No. | Had symptoms | Hospital Admission | ICU | No. | Had symptoms | Hospital Admission | ICU |
| ≤11 | vaccinated | 270 | 153 | 3 | 0 | 59 | 41 | 0 | 0 |
| 12–17 | vaccinated | 31 | 19 | 0 | 0 | 31 | 22 | 0 | 0 |
| | unvaccinated | 15 | 9 | 0 | 0 | 5 | 4 | 0 | 0 |
| 18–29 | vaccinated | 45 | 36 | 2 | 1 | 69 | 62 | 0 | 0 |
| | unvaccinated | 62 | 48 | 2 | 1 | 52 | 49 | 0 | 0 |
| 30–39 | vaccinated | 70 | 54 | 2 | 0 | 64 | 56 | 0 | 0 |
| | unvaccinated | 134 | 111 | 2 | 0 | 24 | 21 | 0 | 0 |
| 40–49 | vaccinated | 94 | 72 | 1 | 0 | 89 | 82 | 0 | 0 |
| | unvaccinated | 237 | 189 | 1 | 0 | 36 | 35 | 0 | 1 |
| 50–59 | vaccinated | 63 | 46 | 1 | 0 | 85 | 78 | 0 | 0 |
| | unvaccinated | 217 | 167 | 1 | 1 | 34 | 28 | 0 | 0 |
| 60–69 | vaccinated | 50 | 42 | 6 | 0 | 35 | 31 | 0 | 0 |
| | unvaccinated | 215 | 172 | 10 | 1 | 8 | 6 | 0 | 0 |
| 70–79 | vaccinated | 18 | 16 | 3 | 0 | 6 | 5 | 0 | 0 |
| | unvaccinated | 121 | 91 | 14 | 2 | 2 | 1 | 0 | 0 |
| ≥80 | vaccinated | 7 | 3 | 4 | 0 | 12 | 8 | 0 | 0 |
| | unvaccinated | 46 | 27 | 7 | 0 | 2 | 0 | 0 | 0 |



Appendix Figure. A) Transmission period, B) Incubation period, C) Serial Interval of Delta detected cases during November 2021 in Cantabria, Spain. Each period graph includes: density plot for the distribution of the calculated time periods (upper figure), a typical boxplot (middle figure) and a cumulative distribution function graph (bottom figure) with a shared x-axis. A), B) and C) have different x-axes.