

# Outbreak of Natural Severe Fever with Thrombocytopenia Syndrome Virus Infection in Farmed Minks, China

Ying Wang,<sup>1</sup> Mingfa Yang,<sup>1</sup> Hong Zhou, Chuansong Quan, Hongtao Kang

Author affiliations: Harbin Veterinary Research Institute, Chinese Academy of Agricultural Sciences, Harbin, China (Y. Wang, M. Yang, H. Kang); Shandong First Medical University and Shandong Academy of Medical Sciences, Taian, China (H. Zhou, C. Quan)

DOI: <https://doi.org/10.3201/eid3006.240283>

We isolated severe fever with thrombocytopenia syndrome virus (SFTSV) from farmed minks in China, providing evidence of natural SFTSV infection in farmed minks. Our findings support the potential role of farmed minks in maintaining SFTSV and are helpful for the development of public health interventions to reduce human infection.

Severe fever with thrombocytopenia syndrome (SFTS) is an emerging disease caused by a novel tickborne bunyavirus, SFTS virus (SFTSV), which was first identified in China in 2009 (1). Outside of China, SFTS was subsequently reported in South Korea, Japan, Vietnam, Myanmar, and Pakistan and now poses a global health problem (2–6). SFTSV is an enveloped virus belonging to the genus *Bandavirus*, family *Phenuiviridae*, order *Bunyvirales*. The virus has 3 single-stranded negative-sense RNA segments, large (L), medium (M), and small (S) (1). The *Hemaphysalis longicornis* tick is widely considered to be the primary transmission vector (7), but the natural animal hosts of SFTSV remain uncertain. Despite the high seroprevalence observed in various domestic animals in SFTSV-endemic regions, such as goats, cattle, dogs, pigs, chickens, and rodents, many of those animals do not show notable symptoms. Those infections were plausibly a result of SFTSV transmission from infected ticks (8).

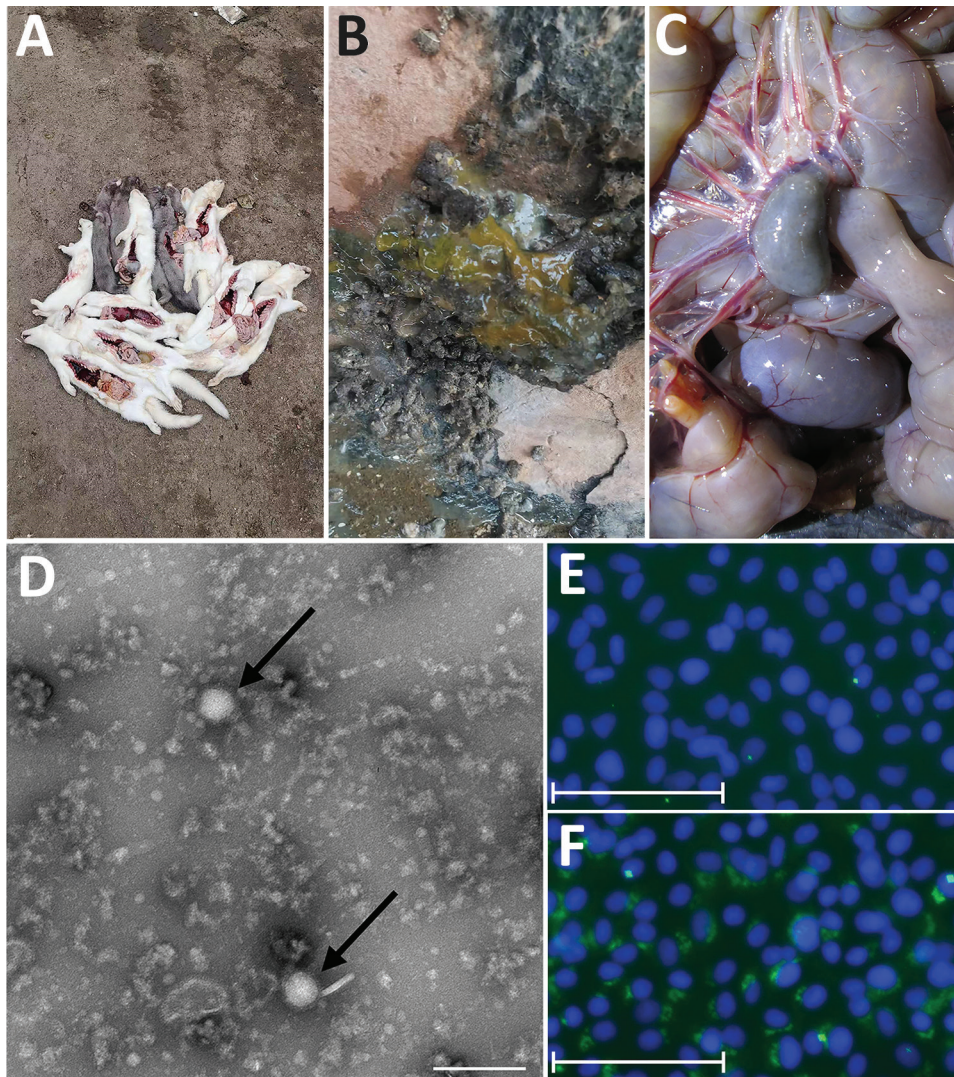
We describe an outbreak of SFTS on a mink farm situated in Shandong, China. During late May through early July, 2022, >1,500 minks on this farm exhibited symptoms such as vomiting, diarrhea, and, in a small number, limb convulsions. Most minks exhibiting clinical manifestations died of the disease (Figure 1, panel A). Clinical manifestations included loose stools, mesenteric lymph node

enlargement, and hyperemia (Figure 1, panels B and C), consistent with typical enteritis symptoms. Treatment with multiple antibiotics was not effective, and mink enteritis virus infection was ruled out through testing with a colloidal gold immunochromatographic assay. Intestinal tissue samples from minks with diarrhea (n = 10) were collected and forwarded to the Harbin Veterinary Research Institute, Chinese Academy of Agricultural Sciences, Harbin, China, for testing.

To identify the causative pathogen, we tested tissue samples for mink enteritis virus, Aleutian mink disease virus, carnivore rotavirus, carnivore coronavirus, and SFTSV. Among those, only tests for SFTSV were positive; cycle threshold (Ct) values were 18–22 (positive samples Ct < 36) using SFTSV-specific primers (9). We obtained the SFTSV isolate from the intestinal tissue samples through a series of blind passages. We visualized virus particles by negative staining and transmission electron microscopy analysis following a discontinuous sucrose gradient purification. Virus particles presented the typical morphology of bunyavirus, as enveloped spherical particles with an average diameter of 100 nm (Figure 1, panel D). We then used immunofluorescence assays to analyze SFTSV nucleoprotein expression in Vero cells. We observed the green fluorescence by using an inverted fluorescence microscope. The results showed that SFTSV nucleoprotein expression was detected in Vero cells (Figure 1, panels E and F). Those results together confirmed the isolate, named SD01/China/2022, was SFTSV.

To obtain the complete genome of the SFTSV SD01/China/2022 isolate, we performed metagenomic next-generation sequencing to the sequence the RNA of the full-length genome. In brief, we constructed RNA sequencing libraries using the MGIEasy mRNA Library Prep Kit (BGI, <https://www.bgi.com>). Subsequently, we generated paired-end reads (100 bp) of the RNA libraries on the BGISEQ-500RS sequencing platform (BGI). We determined the complete genomes of SD01/China/2022, submitted to GenBank (accession nos. PP066883–5), and compared them with previously reported SFTSV strains. Phylogenetic analysis suggested that the L, M, and S gene segments of SD01/China/2022 all descended from C3; the L and M gene segments were genetically closest to the SFTSV strains HB2016-003 *Homo sapiens*/Hubei/China/2016 and the S gene segment was closest to the SFTSV strains SDLZDog01/2011 dog/China/2011 and SDPLP01/2011 *Homo sapiens*/

<sup>1</sup>These authors contributed equally to this article.



**Figure 1.** Clinical manifestations, TEM analysis, and immunofluorescence assay findings in outbreak of natural severe fever with thrombocytopenia syndrome virus (SFTSV) infection in farmed minks, China. A–C) Clinical manifestations were death (A), loose stools (B), and enlargement and hyperemia of the mesenteric lymph nodes (C). D) Virus detection by TEM analysis showed typical enveloped virions (arrows). Scale bar indicates 200 nm. E, F) Immunofluorescent pictures of Vero cells infected with SFTSV SD01/China/2022 isolate. Differences between the blank control (E) and green fluorescence (F) indicates SFTSV particles in the monolayer of Vero cells. Scale bars in panels E and F indicate 75  $\mu$ m.

China/2011 (Figure 2, panels A–C, <https://wwwnc.cdc.gov/EID/article/30/6/24-0283-F2.htm>).

Previous research has shown the presence of antibodies to the nucleoprotein of SFTSV in farmed minks and suggested that minks were infected with SFTSV in China (10). In this study, we successfully isolated and identified an SFTSV isolate, named SD01/China/2022, in farmed minks in China. The symptoms of farmed minks in this case were consistent with SFTS symptoms, such as gastrointestinal disorders and central nervous system manifestations, which proved the occurrence of natural SFTSV infection-related fatalities in this population. Our findings reveal the threat of SFTS to the fur animal-breeding industry. Of note, phylogenetic analysis of the isolate indicated high homology with SFTSV strains in humans, suggesting that the viruses generally infected both humans and minks, further supporting the potential role of farm minks in maintaining SFTSV. Farmed minks have

potential for direct contact with humans and might serve as crucial amplifying hosts in the transmission of SFTSV. Further analysis of SFTSV infection in other captive fur animals, such as raccoon dogs and foxes, will be required to determine other key reservoirs for SFTSV. We recommend a focus on the registration of mink exposure for humans with SFTS-like illnesses, as well as increased measures to reduce SFTSV exposure risk.

This study was supported by the National Natural Science Foundation of China (no. 32370164) and Central Public-interest Scientific Institution Basal Research Fund (no. 1610302022009).

#### About the Author

Ms. Wang is a PhD candidate at Harbin Veterinary Research Institute, Chinese Academy of Agricultural



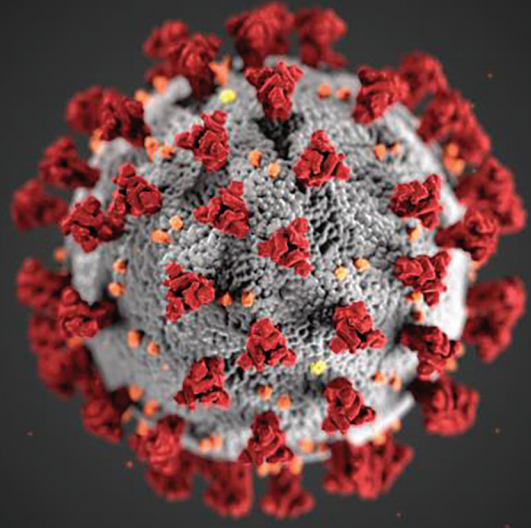
Sciences, Harbin, China. Her primary research interests focus on the host–pathogen interactions of tickborne viruses. Dr. Yang is a research associate at Harbin Veterinary Research Institute, Chinese Academy of Agricultural Sciences, Harbin, China. His research interests focus on phylogeny, virology, and molecular epidemiology, especially for tickborne viruses.

#### References

1. Yu XJ, Liang MF, Zhang SY, Liu Y, Li JD, Sun YL, et al. Fever with thrombocytopenia associated with a novel bunyavirus in China. *N Engl J Med*. 2011;364:1523–32. <https://doi.org/10.1056/NEJMoa1010095>
2. Kim KH, Yi J, Kim G, Choi SJ, Jun KI, Kim NH, et al. Severe fever with thrombocytopenia syndrome, South Korea, 2012. *Emerg Infect Dis*. 2013;19:1892–4. <https://doi.org/10.3201/eid1911.130792>
3. Lin TL, Ou SC, Maeda K, Shimoda H, Chan JP, Tu WC, et al. The first discovery of severe fever with thrombocytopenia syndrome virus in Taiwan. *Emerg Microbes Infect*. 2020;9:148–51. <https://doi.org/10.1080/22221751.2019.1710436>
4. Takahashi T, Maeda K, Suzuki T, Ishido A, Shigeoka T, Tominaga T, et al. The first identification and retrospective study of Severe Fever with Thrombocytopenia Syndrome in Japan. *J Infect Dis*. 2014;209:816–27. <https://doi.org/10.1093/infdis/jit603>
5. Tran XC, Yun Y, Van An L, Kim SH, Thao NTP, Man PKC, et al. Endemic severe fever with thrombocytopenia syndrome, Vietnam. *Emerg Infect Dis*. 2019;25:1029–31. <https://doi.org/10.3201/eid2505.181463>
6. Zohaib A, Zhang J, Saqib M, Athar MA, Hussain MH, Chen J, et al.; Sajjad-Ur-Rahman. Serologic evidence of severe fever with thrombocytopenia syndrome virus and related viruses in Pakistan. *Emerg Infect Dis*. 2020;26:1513–6. <https://doi.org/10.3201/eid2607.190611>
7. Zhuang L, Sun Y, Cui XM, Tang F, Hu JG, Wang LY, et al. Transmission of severe fever with thrombocytopenia syndrome virus by *Haemaphysalis longicornis* ticks, China. *Emerg Infect Dis*. 2018;24:868–71. <https://doi.org/10.3201/eid2405.151435>
8. Niu G, Li J, Liang M, Jiang X, Jiang M, Yin H, et al. Severe fever with thrombocytopenia syndrome virus among domesticated animals, China. *Emerg Infect Dis*. 2013;19:756–63. <https://doi.org/10.3201/eid1905.120245>
9. Yu ZY, Yang MF, Ma YY, Kang HT, Jiang Q, Liu JS, et al. Establishment and application of real-time fluorescent quantitative RT-PCR for the detection of SFTSV [in Chinese]. *Chinese Veterinary Science*. 2022;52:292–7.
10. Wang GS, Wang JB, Tian FL, Zhang HJ, Yin FF, Xu C, et al. Severe fever with thrombocytopenia syndrome virus infection in minks in China. *Vector Borne Zoonotic Dis*. 2017;17:596–8. <https://doi.org/10.1089/vbz.2017.2115>

Address for correspondence: Hongtao Kang, Harbin Veterinary Research Institute, Chinese Academy of Agricultural Sciences, No. 678 Haping Rd, Harbin 150000, China; email: kanghongtao@caas.cn; Chuansong Quan, Shandong First Medical University and Shandong Academy of Medical Sciences, No. 2 Yingsheng East Rd, Taian 271000, China; email: emery\_2008@126.com

## EID Podcast: Animal Reservoirs for Emerging Coronaviruses



Coronaviruses are nothing new. Discovered in the 1930s, these pathogens have circulated among bats, livestock, and pets for years.

Most coronaviruses never spread to people. However, because this evolutionary branch has given rise to three high-consequence pathogens, researchers must monitor animal populations and find new ways to prevent spillover to humans.

In this EID podcast, Dr. Ria Ghai, an associate service fellow at CDC, describes the many animals known to harbor emerging coronaviruses.

**Visit our website to listen:**  
<https://go.usa.gov/x6WtY>

**EMERGING  
INFECTIOUS DISEASES®**